

A Brief History of Logan Elm High School



David L. Beavers

History of Pickaway County School Consolidation

David Beavers

Since the formation of the county in 1810, the evolution of schools and education has transpired. Starting with log school houses, to the red brick one-room schools, and then to the centralized schools, the school landscape has continued to change over the years. From the 130 one-room schools in the county at the beginning of the 20th century, the centralization of schools had reduced that number to 18 school districts by 1914. Even that number was to change again only 24 years later.

By 1938 it was the desire of the Pickaway County Board of Education to begin reorganization of the county schools. The high schools had low enrollment, and the board decided it was best to consolidate some of the smaller schools.

The Wayne Township high school students were granted permission to attend Circleville High School at the May 4, 1938, meeting. The Wayne Township School remained a 1-8 building for the rest of the students.

At the April 15, 1939, board meeting, the board members read a letter from Franklin H. McNutt, the Director of the Ohio Division of Instruction, who recommended that the charters of Muhlenberg and Washington Township High Schools be annulled and the high schools be closed. The state asked the county board to give reasons why this action should or should not be taken. The board requested that the state allow the First Grade Charter to stay in effect until at least the end of the school year.



Muhlenberg School

In June of 1938, the Boards of Education from Pickaway, Ross, and Hocking Counties met to discuss consolidating the high schools of Adelphi-Harrison, Laurelville, and Salt Creek due to low enrollments in those three high schools. No agreement could be made.

On June 7, 1939, the county board transferred the territory of Muhlenberg Township district to Monroe and

Darby Township schools with the elementary school at Muhlenberg to remain open. A remonstrance by the residents of Muhlenberg Township, protesting the action of the county board was rejected due to the lack of sufficient signatures. In August of that year, the Muhlenberg Board of Education filed a law suit against the county board for the transfer of its territory. The suit was filed in the Pickaway County Court of Common Pleas under the heading "The Board of Education of Muhlenberg School District, plaintiff, versus the County Board of Education and the Monroe Township Board of Education, and Forrest Short, auditor of Pickaway County, Ohio, defendants." The court rendered its decision in favor of the county board. Muhlenberg appealed the decision, and the Court of Appeals overturned the decision of the lower court. The county board then appealed the case to the Ohio Supreme Court. This case lasted for several months and many lawyers were hired to argue the case. Although the decision of the Ohio Supreme Court was never entered into the county board minutes, the next year the local residents agreed to a settlement even though the case was still before the Ohio Supreme Court at the time.

The county board at its June 5, 1940, meeting was presented with a petition signed by 204 registered voters in the Muhlenberg School District and 374 in the Monroe School District requesting that the two districts merge into one new school district to be named the Monroe-Muhlenberg Rural School District. This petition came about because the State Department of Education had revoked the high school charter for Muhlenberg High School. Since the petition contained a majority of registered voters in the two affected school districts, the county board approved the merger and created the new school district.

On March 6, 1946, the Circleville Township Rural School District was dissolved and the district transferred to the Circleville City School District. At the next meeting, April 3, a petition with 51% of the eligible voters' signatures was presented to the county board in protest of the transfer. After conferring with the State Department of Education, the State Department denied the motion to transfer the district due to the fact that a majority of the voters were opposed to the move and according to Ohio law, the majority wishes were to be honored.

The Tarlton Village School District was transferred to the Salt Creek Township Rural School District at the July 7, 1948 county school board meeting.

By 1953, sentiment had changed in Circleville Township. A petition was presented to the county board on September 2, 1953, requesting that the Circleville Township Rural School District be transferred to the Circleville City School District. Since Circleville Township had no school buildings and the students were already attending school in Circleville City on a tuition basis, the county board approved the transfer. The Circleville City School Board also approved the transfer at its November 17th meeting. Thus, the Circleville Township Rural School District was dissolved.

A citizens' committee was created by the county board of education on October 6, 1954, to study how best to consolidate the county schools in accordance with HB 128 of the Ohio General Assembly. The committee members were Charles Rose, Harford Renick, Curtis Fisher, Paul Peck, Boneta Hill, D. Haydn Evans, Louise Roth, Arthur Leist, and Clarence Maxson. The citizens' committee reported a plan on August 24, 1955, which would place all the school districts in the county under one board of education. The school district would be called the Pickaway County School District. Since the State Superintendent of Public Instruction, R. M. Eyman, approved the plan, the county board requested that the question of one county school district be placed on the November 1955 ballot. The voters defeated this plan by a 3.5 to one ratio. Local control of schools was still very important to most voters.

On January 12, 1956, the boards of education from Washington, Walnut, Madison, and Ashville-Harrison met to discuss the possible consolidation of these districts. On April 11 of that same year, a meeting was held at the Pickaway Township School to discuss the possible consolidation of the Kingston-Union, Salt Creek, Pickaway, and Washington Schools. On April 25, 1956, the Washington Township and Circleville City school boards met to discuss consolidation of the two districts.

Dr. William Chase of the Center for Educational Services at Ohio University spoke to the county schools at a meeting held at Walnut School on April 19, 1956, to discuss making a survey of the area schools in order to learn the best way to consolidate. Dr. Chase was then employed in May by the county board to conduct an educational survey of the schools in Pickaway County and to develop a plan for consolidation of the county schools since the one county school system was soundly defeated by the voters. He made his report to the county board on July 17, 1957. The county board authorized 1,075 copies of his report to be printed and distributed to the members of the Educational Council, board members, school personnel, and interested citizens. From this plan, the county board began to make plans for consolidation.



Logan Elm H.S.

On August 7, 1957, the newly created Logan Elm School District was approved by the county board. The district consisted of Washington, Pickaway and Salt Creek Township Schools. On September 9, the county board named the board members for the Logan Elm School District. They included Frank Graves and Dr. Wells Wilson from Pickaway with Ralph Betz and Dr. S. G. Messamer from Washington, and Dow West representing Salt Creek.

As expected, when the topic of school consolidation was discussed at various board meetings, there were many different opinions of how it should be done. After the county board created the Logan Elm School District, the Washington Township School board members voted to protest the decision. Thus, a special county board meeting was called to order on August 28, 1957, to hear the complaint from the Washington Board. Mr. William Crist, president of the Washington Board, spoke against the plan, stating that four of the five board members were in favor of consolidating with the Circleville City School System since the high school students had been attending Circleville High School since 1947. Only Ralph Betz was in agreement with joining the Logan Elm School District. Mr. Crist requested that the county board rescind its actions of August 7th that created the new school district. The county board rejected the request.

At a special Washington Township School board meeting held on August 28, 1957, James Arledge, Pete Bowman, Emmett Hinton, and William Crist resigned in protest of the county board action. This left only Ralph Betz on the Washington board. With the help of county superintendent, George McDowell, a new board was appointed. Those appointed were Arthur Leist, Frank Lands, James Stauffer, and David Bolender. These five men constituted the last Washington Township Board of Education. They also had the shortest term of office in local school history since they served for only four days and received the sum of three dollars for their services.

In accordance with Section 3311.26 of the Ohio Revised Code, a meeting was held on October 2, 1957, by the county board to create three more new school districts. In one resolution, three new school districts were creat-

ed. The Northwest School District would consist of Darby, Scioto, Muhlenberg and Monroe Schools; The Northeast School District would include Ashville-Harrison, Madison and Walnut schools; and the Southwest School District would be made up of Jackson, Deercreek (Williamsport), New Holland, Perry (Atlanta), and Wayne Township Schools. The motion passed on a unanimous vote.

Because of a possible legal issue, the county board met in a special meeting on October 14 and discussed their actions at the October 2 meeting. It was decided that the Ohio Supreme Court would probably rule their action invalid since three school districts were created in only one resolution instead of three. Thus, the board rescinded its actions of October 2 and decided to meet again and create the new districts after more discussion with the schools involved.



Westfall High School

Between October 14 and November 6, the county board members had a change of mind about how to consolidate the remaining school districts. Instead of creating three more school districts, the board decided to create only two more districts. The first of these two new districts was Westfall School District, which was created at this November 6, 1957, county board meeting. This district consisted of Darby, Monroe, Muhlenberg, Jackson, Perry (Atlanta), Deercreek (Williamsport), New Holland and Wayne Townships. Board members chosen to represent Westfall were Raymond Reiterman, H. N. Stevenson, Dr. Paul Fenstermaker, Hoyt Martin and Everett Grabill.



Teays Valley High School

The second school district, Teays Valley School District, was created at this meeting, consisting of the following schools: Scioto, Ashville-Harrison, Madison and Walnut. Harold Hines, James Moody, John Moss, Delphia Remy and W.O. Dountz were appointed as the first board members.

Like the new Logan Elm School District, the other two newly created school districts had their share of controversies. At the very same November 6th meeting, the New Holland board of education made a request to not be a member of the Westfall School District but to be allowed to join the new Miami Trace School District in Fayette County. The county board denied the request because it would interfere with the consolidation plans and New Holland was an integral part of Pickaway County.

Since the high school students from Wayne Township had been attending Circleville High School since 1938, the Wayne Township School Board at this meeting also objected to being a part of the Westfall School District. The Wayne Township board requested to transfer the district to Circleville City Schools. The county board denied this request as well, stating that the students would best be served in the new Westfall School District.

In addition to these two school districts seeking a change at the meeting, a group of Washington Township residents, led by Mr. William Crist, asked that a portion of Washington Township be allowed to transfer to Circleville City. This portion was mainly along Route 22 to Bolender-Pontius Road and included Knollwood Village. Since the county board had previously denied allowing the entire Washington Township to be transferred to Circleville City, the board denied this request as well. The board felt that this territory was needed to make the Logan Elm School District more viable. The group headed by Mr. Crist decided to appeal the decision to the State Board of Education.

At the very next county board meeting held on December 4, 1957, the Walnut Township School Board sent a letter to the county board stating that the local board by a unanimous vote was not in favor of the newly created Teays Valley School District but was in favor of the original plan for a Northeast School District which did not include Scioto Township. The addition of Scioto Township made the district geographically too large, especially when it came to transporting high school students to one location. Also, the plan did not take into consideration future growth in the district which would make any new high school too small in the years to come. The county board noted the objection but did not grant the request to reduce the size of the district.

At this meeting, the residents from New Holland were back with a remonstrance petition signed by 283 eligible electors. The petition requested a transfer to Miami Trace. The county board said that since New Holland was part of the Westfall School District, it would take a total of 1,021 signatures from the various voters throughout the Westfall District in order to be valid. Thus, the request was again denied. The petitioners decided to appeal the decision to the State Board of Education.

Three days later, the county board again met. Facing the board was a remonstrance petition from Wayne Township signed by 86 qualified resident electors seeking a transfer to the Circleville City School District. The county board said that even if those signatures were added to the 283 signatures from New Holland, the number was far short of the required 1,021 needed signatures. The request was denied. The petitioners decided to appeal the decision to the State Board of Education.

The State Board of Education met on February 10, 1958, to hear the three requests from Pickaway County on the issue of transferring school districts. After all sides and their legal councils presented their arguments, the State Board of Education ruled in favor of New Holland, Wayne Township, and the residents from Washington Township. All three transferrals were granted over the strenuous objections of the Pickaway County Board of Education and its lawyers. Thus, at the March 5, 1958, regular board meeting, the county board had no choice but to grant the request. New Holland was now a part of Miami Trace, Wayne Township became part of Circleville City, and that western portion of Washington Township also became part of Circleville City. As a result, both Westfall and Logan Elm School Districts lost territory and students. Logan Elm also lost a board member. Since Dr. Messmer was a resident of Knollwood Village, he had to resign from the Logan Elm Board of Education.

Mr. Paul Cummins, Fairfield County Superintendent, wrote a letter to the Pickaway County Board of Education, dated April 29, 1958, informing the board that on March 29, a petition signed by approximately 400 eligible electors of the Clearcreek Township Local School District was presented to the Fairfield County Board requesting that the entire Clearcreek Township School District be transferred to the Logan Elm School District under authority of Section 3311.231 of the Ohio Revised Code. This was well over the required 55% of those who voted in the last general election. The letter went on to state that a counter petition, containing 474 eligible signatures, had also been presented to the Fairfield County

Board asking that the board delay any action on the other petition until a study could be made by Ohio University on the possible consolidation of schools in Fairfield County. At the May 7, 1958, Pickaway County Board meeting, after the letter was read, the board voted to abide by whatever decision the Logan Elm School Board should take on the proposal.

At the May 6, 1959, county board meeting, a motion was approved to accept the Clearcreek Township School District as part of the Logan Elm School District since the Logan Elm Board of Education was in favor of the merger. Also, the county board had received a letter from the Secretary of State that everything was in order to accept the transfer. In anticipation of the board's approval, land for the new high school was purchased where the four townships of Washington, Pickaway, Salt Creek and Clearcreek met. The site was on Tarlton Road, even though the county engineer had requested that it be located on Route 56 near the intersection with route 159.

After the Ohio University study was completed, the Fairfield County Board of Education blocked the transfer of Clearcreek Township and thus it never did become a part of the Logan Elm School District. This decision angered many of the Clearcreek Township citizens, since many of the Stoutsville residents traded in Circleville, but they were soon to join with Amanda to form their own school district.

About the same time, some residents from the Kingston-Union School District in Ross County wanted to be part of the Logan Elm School District and requested to join. However, the Kingston-Union School District voted not to join. Kingston-Union was to later join with Centraillia to form the Zane Trace School District.

Although Clearcreek and Kingston-Union were prevented from becoming a part of the Logan Elm School District, the borders of the district would soon change. At a special county board meeting called on June 19, 1972, Tom Quick, the Assistant State Superintendent of Public Instruction, informed the county board that since the state had revoked the high school charter at Laurelville High School, the district had to be transferred to a neighboring district, either Logan Elm or Logan City. It was the state's desire that the West Hocking School District join with Logan Elm. (This school district had requested entry as early as 1958 when the Logan Elm District was formed.) Mr. Quick stated that if the county board did not voluntarily agree to the transfer, the state would probably assign the district to Logan Elm anyway. Although the influx of students would overcrowd Logan Elm High School and the newly opened McDowell Junior

High School, the impact would not be as great as it would be for Logan City. Under the state's proposal, part of Laurel Township would be transferred to Logan City with the townships of Perry and Salt Creek and the rest of Laurel Township, all in Hocking County, to be transferred to Logan Elm.



Laurelville School

After much discussion and many concerns about the future of Logan Elm should such a merger take place, the board reluctantly agreed to the transfer, albeit with many reservations. The overcrowded conditions were a major concern of everyone on the board. The problem still exists today in the district.

In July of 1969, the county board passed a resolution as being in favor of the creation of the Pickaway-Ross Joint Vocational School. On May 7, 1970, the board voted to join the Pickaway-Ross Joint Vocational District with Nelson Jones and Nelson Stevens becoming charter board members representing Pickaway County. The county board was given a third seat a couple of years later. At the February 5, 1976, county board meeting, Logan Elm and Westfall requested that the two local boards each have a member on the Vocational Board with the county office having one seat. The county board rejected the request since a majority of all the school boards in the Joint Vocational District would have to vote for the change. This was highly unlikely since none of the local



Pickaway-Ross

school districts had representatives on the board. The vocational board was comprised of members from the Ross County, Pickaway County, Circleville City and Chillicothe City school boards. Westfall and Logan Elm requested to have representations again in 2002. Although the Pickaway County Board agreed to the request, the Vocational Board rejected the request. With the death of Everett Beers in 1997, the county board gave up its seat on the Eastland Vocational Board in favor of a representative from the Teays Valley Board serving in that capacity. The Eastland Vocational Board agreed to that request.

Senate Bill 475 being debated in 1973 would have eliminated county boards of education by replacing them with regional Educational Resource Centers. The Pickaway County Board of Education opposed this reorganizational plan. The bill did not pass. This was only one of many attempts to do away with the county office.

In 1993, the county offices became known as Educational Service Centers which resulted in combining some offices so that the number of county offices was reduced from 88 to 60. With the change in name also came changes in services. Instead of being a regulatory agency, the county office became a service agency. In 2003, the state of Ohio again began to look at regionalization as a way to streamline services.

At the March 3, 1997, county board meeting, a letter from the Franklin County Board of Education was read. The Franklin County Board wanted to know if Pickaway County would be interested in taking over the Groveport-Madison School District, possibly transferring it to the Teays Valley School District. Since the Franklin County Board of Education had not followed the prescribed procedures, the Pickaway County Board of Education drafted a response indicating its disapproval of the handling of this situation. The matter was discussed again at the April board meeting, but no action was taken. Eventually, the offer to transfer the Groveport-Madison School District to Pickaway County was rescinded.

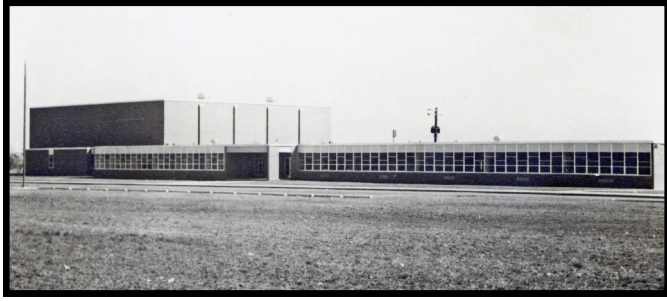
It is interesting to note that in a speech given in 1976, Dr. Martin Essex, Ohio Superintendent of Instruction predicted that within ten years, all the schools would be centralized into one county system. Although that may someday happen, with all the problems the schools have faced in previous consolidations, most legislators are not willing to tackle that issue and face angry voters.

Sources:

Pickaway County Board of Education and local boards of education minute records.

Logan Elm School District

By David L. Beavers



Logan Elm High School in 1960

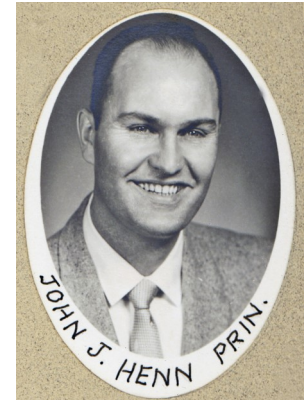
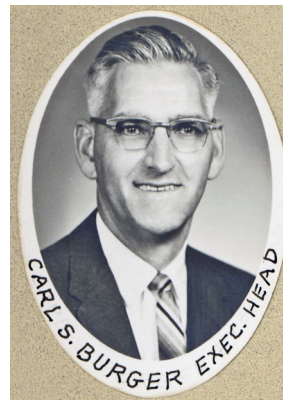
At the halfway mark in the twentieth century, most of the schools in southern Pickaway County were aging and could offer only a limited curriculum to their upper level students because of the small class sizes. The average graduating class had only 20-25 students during the 1950s, and talk of consolidation among the local area schools had begun as early as 1936 but became more serious in 1954. The Logan Elm School District was formed on August 7, 1957 by the Pickaway County Board of Education, under the direction of County Superintendent George McDowell. One of the first tasks of the newly appointed Logan Elm Board of Education was to secure a site for the new high school.

According to the October 27, 1958 edition of the *Circleville Herald*, Logan Elm High School was to be situated on farmland owned by Raymond Moats on Tarlton Road. Since the district was originally to consist of Pickaway, Salt Creek and Washington Townships in Pickaway County, Clearcreek Township in Fairfield County, and Kingston-Union in Ross County, the site was the geographic center of those areas and very close to the intersection of Clearcreek, Pickaway, Salt Creek and Washington Townships. Washington School was 5 miles to the high school, Stoutsville 5.5 miles, Salt Creek 7 miles, Pickaway 7.5 miles and Kingston 8 miles. The Board also obtained a right-of-way for a road running north from Zane Trail to the high school. As of this writing, the road has been discussed as a possibility but never brought about.

According to minutes of the Pickaway County Board of Education, Mr. Paul Cummins, Fairfield County Superintendent, wrote a letter to the Pickaway County Board of Education, dated April 29, 1958, informing the board that on March 29, a petition signed by approximately 400 eligible electors of the Clearcreek Township Local School District was presented to the Fairfield County Board requesting that the entire Clearcreek Township School District be transferred to Logan Elm School Dis-

trict. The letter also stated that a counter petition containing 474 eligible signatures had been presented to the Fairfield County Board asking that the board delay any action on the other petition until a study could be made by Ohio University on a possible consolidation of schools in Fairfield County. The Pickaway County Board decided to abide by whatever decision the Logan Elm Board made on the proposal. Logan Elm favored the merger. The Ohio Secretary of State sent a letter stating that everything was in order for the transfer. After the Ohio University study was completed, the Fairfield County Board of Education blocked the transfer of Clearcreek Township to Logan Elm. Clearcreek soon joined with Amanda to form another school district. At about the same time some residents from the Kingston-Union School District in Ross County requested to join the Logan Elm School District. However, the Kingston-Union School Board voted not to join. It later joined with Centralia and Adelphi to form the Zane Trace School District.

Once the site had been selected, the Logan Elm School Board had to raise the money for the new school building. The 3.67 mill bond levy approved by the voters to build the school was scheduled to bring in the needed \$940,000 for construction. They hired Van Buren, Ayers and Blackburn as the architectural firm to design the new structure and add a new gymnasium to Washington. The high school was built to accommodate 450 pupils in order to serve students from the combined districts. It contained eight lecture classrooms, two science laboratories, two business education classrooms, two home economics laboratories, an industrial arts shop and classroom, a library, mechanical drawing shop, vocational agricultural shop and classroom, art room, kitchen-lunch room, gymnasium-auditorium with maximum seating capacity of 1,100, music room, and health clinic. Administrative offices, mechanical rooms, storage and



rest room facilities were also included. The plans included future expansion for another 100 students.

The newly organized Board of Education, Frank Graves, Orley Judy, Wells Wilson, Judson Beougher, and David Bolender, selected John Henn as the new principal of Logan Elm High School. Mr. Carl Burger became the first executive head of the new school district. Both had been administrators at Mt. Sterling before coming to Logan Elm. The teachers hired for that first year included Carol and Mark Albright, Gobel Branham, Jeannette Chilcote, Alice DeLong, William Drum, Dorothy Hamrick, Jerry Hanes, Keith Merrin, Jean Mills, Victor Pontius, Dorothy Sampson, Elizabeth Umsted, and Mildred Wertman.

Logan Elm was the first consolidated high school in the county since the centralizing of the one room school districts. A total of 270 students entered the new high school in the fall of 1960. Most of the high school was completed by September, but students entering the new building could not go all the way down the front hall because a plastic barrier was erected to allow the construction of the gymnasium to continue.

The student body that first year had a lot of important decisions to make; they had to select the school colors and the mascot. Four color combinations were put on a ballot for the students to choose: green and white; red, white and blue; red and white; and red, white and black. The choices were suggested by the student body and narrowed down to four by the student council and faculty. Voting took place by the student body on September 28, 1960. Red, white and black became the official school colors. Even though the color combinations on the ballot were not like any of the original three high schools, the winning colors of red, black and white for Logan Elm are a combination of red and gray from Salt Creek, purple and white from Washington, and gold and black from Pickaway. From a list of four mascots that included Chiefs, Mingos, Pioneers and Braves, the students voted for the official mascot as reported in the October 5, 1960 issue of the school newspaper. The school's sports teams would be known as the Logan Elm Braves. The Brave's head logo for the high school was chosen from four drawn by Carl Smith.

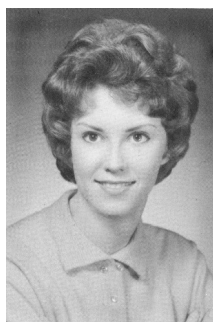
The Student Council was organized with the following officers: President, Sharon Sharrett; Vice President, Joe Goeller; Secretary and reporter, Carol Torchick; and Treasurer, Roger Clarke.

The annual staff was headed by editor, Anne Smith, and assistant editor, Verna McFadden. Mrs. Carol Albright was the advisor. The yearbook staff chose *Skandha* for the official name of the annual. According to the very first issue of the *Skandha*, the name "is an Indian word

which means 'to collect or unite; bring together.'" Appropriately it would bring together memories for the students in a new school that brought together three school districts.

The editor of the official school newspaper, Janey Hockman, and the assistant editor, Janet Bower, along with the advisor, Mr. Bill Drum, asked the students for suggestions in the naming of the paper. From the many suggestions, including *Mingo Gazette*, the name that was selected was the *Logan Elm Highlights*. Many of the students complained that the name was too similar to the popular children's magazine, *Highlights for Children*. The next year, the name was changed to the *Elm Log*. The newspaper sold for ten cents a copy.

Verna McFadden was chosen by the student body as the first Miss Logan Elm for the 1960 Pumpkin Show. Verna was a member of the junior class. Carol Torchick, another member of the junior class, was selected as Miss Logan Elm the next year and became the first of many Miss Pumpkin Shows from Logan Elm High School.



Verna McFadden



Carol Torchick

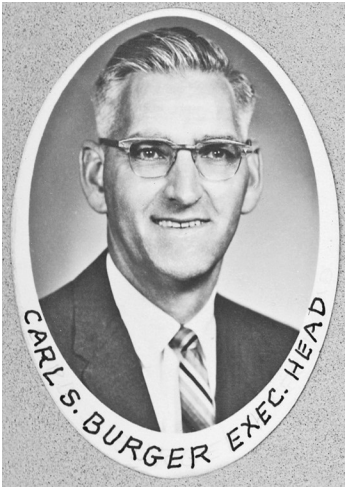
The first graduating class had 52 members with Anne Smith as valedictorian and Harriet Anderson as salutatorian.



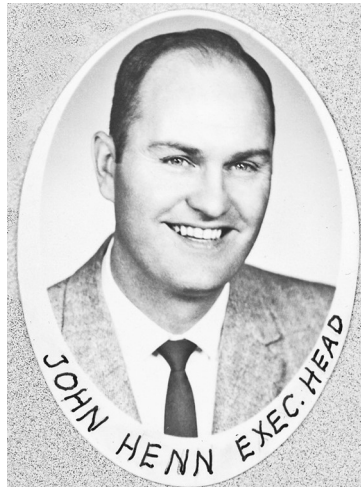
The addition of three more townships from Hocking County in 1972, Salt Creek, Perry and part of Laurel almost doubled the size of Logan Elm High School to 775. Graduating classes number around 160, three times the size of the first class.

The graduating class of 2023 was the last to graduate from the old school. With the passing of the bond levy in 2018, the new K-12 school opened in the fall of 2023.

Logan Elm Superintendents



Carl S. Burger, 1958-72



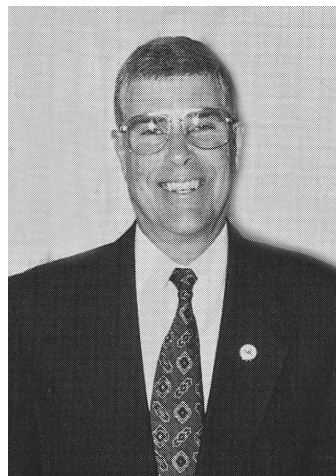
John J. Henn, 1972-1980



Howard Curth, 1980-83



Jack Maddox, 1983-90



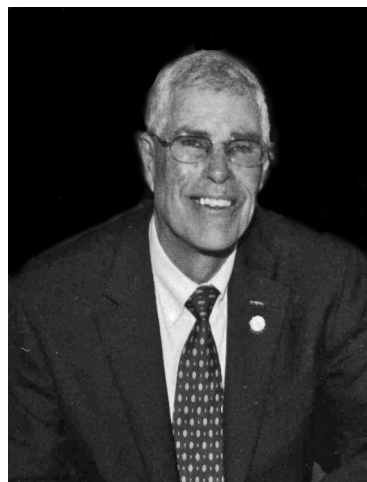
John Edgar, 1990-2005



Asa Bradbury, 2005-08



**Wyonna Jan Broughton,
2008-09**



John Edgar, 2009-2012



Tim Williams, 2012-

1962



Skandha

1962 SKANDHA

*LOGAN ELM HIGH SCHOOL
CIRCLEVILLE, OHIO
VOL. II*

EDITOR
Brad Huffines

LAYOUT EDITOR
Carol Torchick

BUSINESS MANAGER
Jackie Evans



TABLE OF CONTENTS

Administration	4
Faculty	7
Seniors	15
Juniors	27
Sophomores	35
Freshmen	43
Sports	53
Activities	65
Advertising	75

Carol Torchick, Miss Pumpkin Show 1961





OUR BOARD

The Logan Elm Board of Education is a group of taxpayers who are elected by the people of the district to represent them in matters concerning property maintenance and administration of the district's schools.

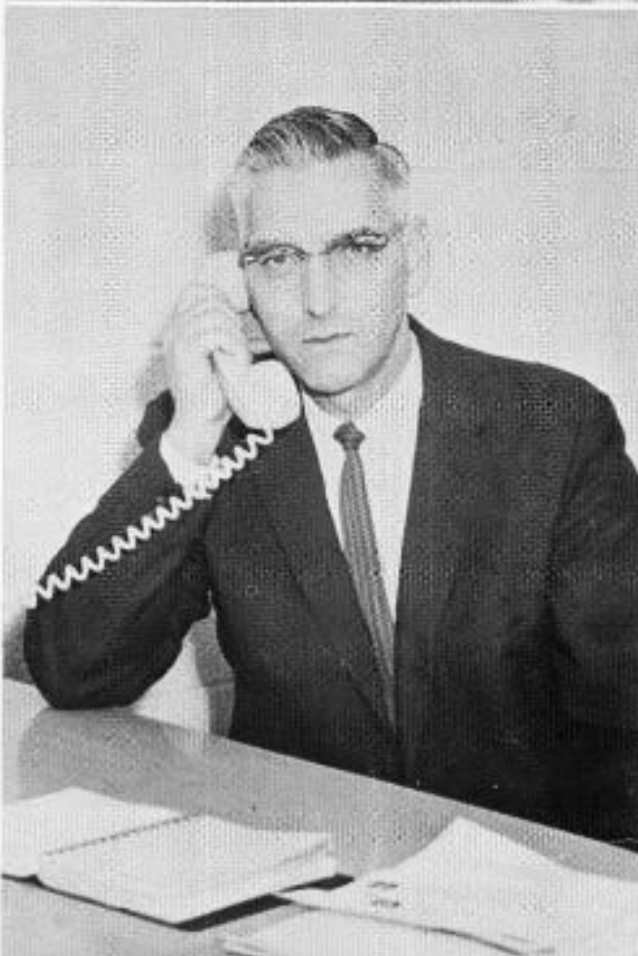
FIRST ROW: Ann Elsen, Clerk; Orley Judy, President; David Bolender. SECOND ROW: Arthur Leist; Lawrence McKenzie; Neil Morris.

OUR EXECUTIVE HEAD

MR. CARL S. BURGER
 B. S., Ohio State University
 M. A., Ohio State University

Mr. Burger's duties include the supervision of the three elementary schools as well as the high school.

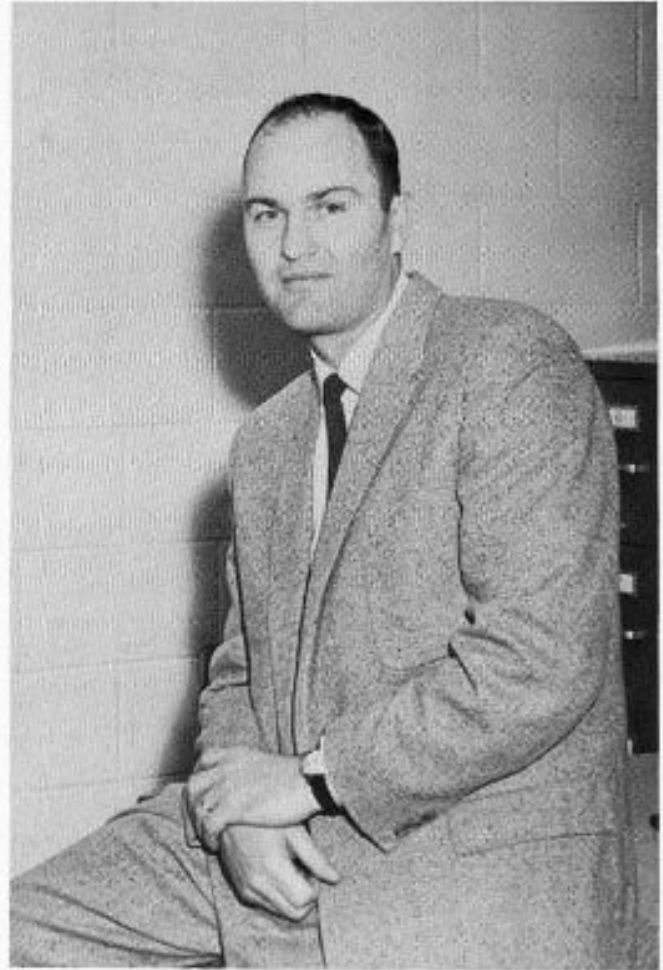
CIRCLEVILLE METAL WORKS, INC.
 127, 129 EDISON AVENUE
 CIRCLEVILLE, OHIO



OUR PRINCIPAL

MR. JOHN J. HENN
B. A., Defiance College
M. A., Bowling Green University

As principal of the high school, Mr. Henn supervises the daily routine. As well as his administrative duties, he also serves as a counselor to the students and has two classes in guidance.



OUR SECRETARY

MRS. ANN ELSEA

HER ASSISTANTS:

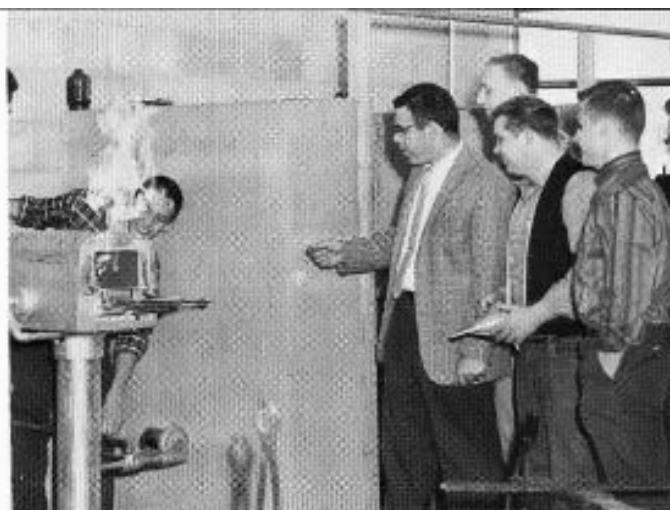
Sandra Grissom, Diana Ankrom, Sue
Courtright, Dick Dean, Carol Ginther.

NOT PICTURED: Janet Bower





MR. GOBBLE BRANHAM
B. S. ; Eastern Kentucky
State
Industrial Arts, Mechanical
Drawing, General Business
Junior Class Sponsor



MRS. JEANNETTE CHILCOTE
B. A. ; Ohio Wesleyan, Work
at Ohio University and Ohio
State University
English, Home Economics,
Senior Class Sponsor

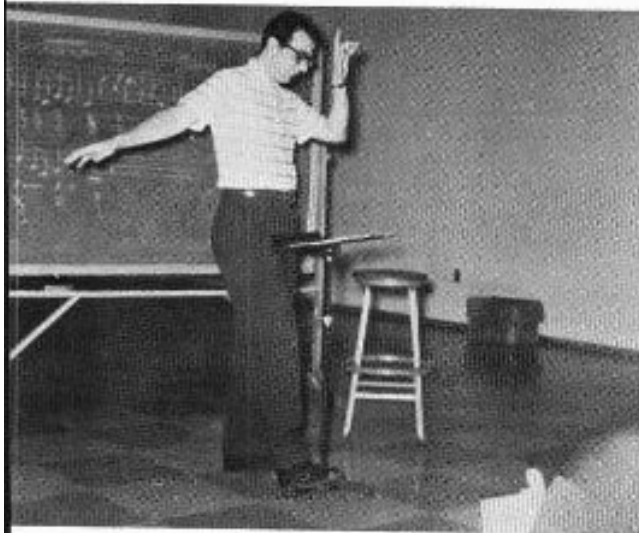


MISS ALICE DeLONG
B. A. ; Otterbein College
French, Commercial
Asst. Adviser to Ameri-
canism Council
Freshman Class Sponsor





MR. WILLIAM DRUM
B. S. ; University of Arizona
Business Education, Drama,
Jesters Advisor, Business
Manager, School Paper
Advisor, Annual Advisor



MR. JERRY HANES
B. A. ; Ohio State University
Instrumental and Vocal
Music Instructor, Fresh-
man Basketball Coach,
Freshman Class Sponsor



MRS. GEORGE HAMRICK
B. A. , B. S. ; Rio Grande and
Ohio State University
Social Studies and Girl's
Physical Education
Cheerleader Advisor





MR. CHARLES JENKINS
Ohio State University
Latin II, Latin Club



MR. KEITH MERRIN
B. S. ; Capital University
Math, Physical Education
Basketball, Football,
Track Coach, Sophomore
Class Sponsor



"Two weeks detention!"

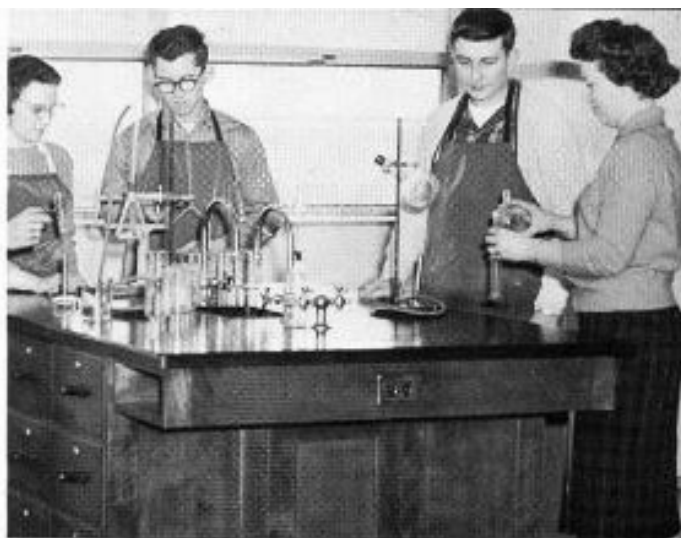


"The pause that refreshes."





MRS. JEAN MILLS
B. A. ; Marshall University
Attended Ohio State University
Algebra, Geometry,
Chemistry, Solid
Geometry, Trigonometry
Student Council Advisor
Honor Society Advisor
Junior Class Sponsor



MR. VICTOR PONTIUS
B. S. ; Ohio State University
General Science, Biology
World Geography
Reserve Basketball Coach
Baseball Coach, Senior
Class Sponsor



♣ Let it Snow! Let it Snow! Let it Snow! ♣

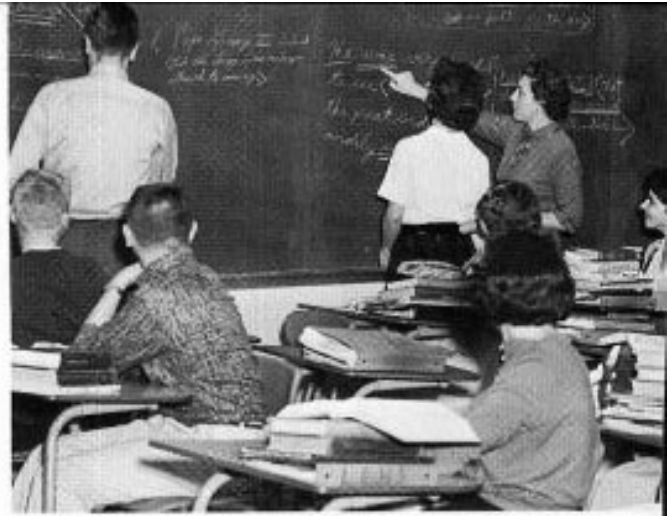


"Tickets please"





MRS. DOROTHY SAMPSON
B. A. ; Indiana University
Attended Ball State Teachers'
College, Ohio State Univer-
sity
English, Speech,
Freshman Class Sponsor



MISS MILDRED WERTMAN
B. S. ; Ohio State University
History, English, Librarian,
Sophomore Class Sponsor



MR. DOW WEST
B. A. ; Ohio State Univer-
sity
American History, Ameri-
can Government, Mechanical
Drawing
Americanism Council Advisor,
Sophomore Class Sponsor





OUR COOKS

Mrs. Emmett Hinton
Mrs. Clyde Hedges

OUR CUSTODIANS

Ralph Wolfe
Charles Barnhart



OUR BUS DRIVERS

Phil Wilson
Bob Young
Russel Andrews
Paul Congrove
Carl Anderson
Paul Spung
Edgar Harrel





CLASS OF '62

Class Motto Life is what you make it.

Class Colors Blue and white

Class Flower Carnation

Valedictorian David Lee Beavers

Salutatorian Sandra Kay Grissom

Baccalaureate Sermon.
The Reverend Paul Brown

Commencement Address
Dr. Harvey Charles Hahn

COMPLIMENTS OF
HUFFINES INSURANCE AGENCY
KINGSTON AND CIRCLEVILLE



FIRST ROW: Gene Jordan (Manager), Coach Keith Merrin, Paul Bower (Manager). SECOND ROW: Terry Anderson, Roger Clarke, Lenny Hardman, Don Burger, Bob Parker, Dan Hicks, Chuck Spangler, David Horn, Brad Huffines, Tom Huffines, Gary Hardman.

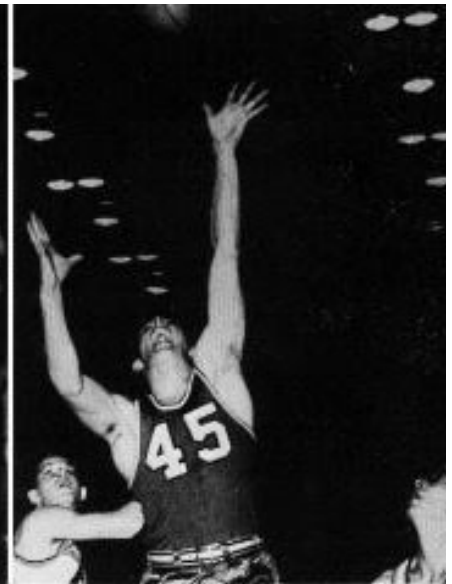
The Logan Elm Braves compiled a very impressive record for the season. The Braves were both humble winners and gracious losers. The team aroused much interest and enthusiasm which was shown by the support of many loyal fans. Being one of the top eight teams in the state is one of the honors which the Braves earned. Because of this fine team, Logan Elm is known as the "Home of the Braves."

On April 23, 1962, the second annual basketball banquet was held to honor the Braves. The event, sponsored by the Booster Club, was held in the gym to accommodate the huge crowds that follow famed Jerry Lucas, our guest speaker.

On the program, as one of the anticipated moments, was the presentation of the special awards. This year they were given as follows:

- Gary Hardman . . . Most improved player
- Dave Horn Most improved player
- Danny Hicks Leading rebounder
- Chuck Spangler . . Most valuable player





SEASON GAMES

<u>Logan Elm</u>		
61	Centralia	44
74	Kingston	47
71	Jackson	35
61	Scioto	42
63	Mt. Sterling	47
63	Ashville	72
50	Whetstone	49
68	Williamsport	49
71	Walnut	49
61	Bremen	50
63	Monroe	42
60	Southeastern	40
57	Darby	43
74	Frankfort	76
63	Carroll	52
77	Amanda-Clearcreek	50

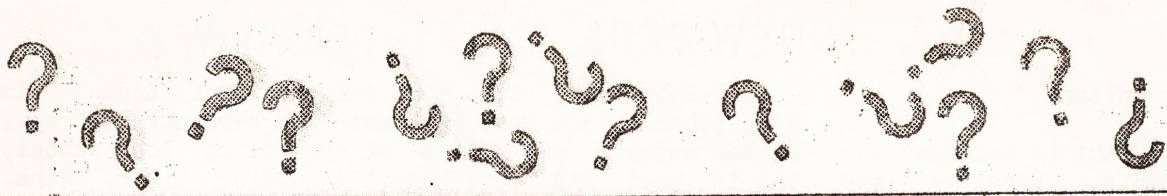
TOURNAMENT GAMES

<u>Logan Elm</u>		
62	Walnut (County)	43
57	Scioto "	44
62	Ashville "	73
50	Pickerington (District)	44
74	Ashville "	71
59	Rodgedale "	56
58	Fairland (Regional)	53
45	Fort Frye "	46

LLOYD E. DAVIS
 SOHIO SERVICE
 ROUTE 1
 CIRCLEVILLE, OHIO



First School Newspaper



Volume I, Number 1

Logan Elm High School

September 12, 1960

LOGAN ELM OPENS ITS DOORS STUDENTS at OSU

Today being the twelfth day of September, 1960, approximately 270 high school students have entered into the halls of Logan Elm for opening day classes.

After many days of preparation the school is ready to undergo the hustle and bustle of the first new school year.

As we enter into the building we wonder if the picture we see before our eyes is real or is it just a mirage. It has been planned and talked about for such a long time that it is hard for us to accept it as being true.

The desks, so new and different being of red and blue, are arranged neatly on floors of a different color and pattern in each classroom.

The walls being of a fresh color are for the support of the building and not for leaning upon. Let's try to keep our hands busy in the books while going through the halls and away from the walls. Pencil marks on the walls and desks don't make pleasing sights for visiting parents and friends, do you think?

ATTENTION !!

All juniors and seniors interested in being on the annual staff, please hand in a slip of paper with your name and grade to Mrs. Albright before school lets out today.

≡ ○ ≡

Boys take heed! If it's true the way to your heart is through your stomach beware of all Home Economic students. With all the new equipment some very good cooks should soon turn up.

The cafeteria is so arranged with new round tables to save the ears of the faculty and lungs of the students as reported by Mr. Burger.

We are extending an invitation to all who would like to see our new and beautiful building.

Students and parents alike should be very proud of Logan Elm High School and be willing to work together to keep it as neat and presentable as possible.

PATRONS TAKE HEED

Will all patrons of the Logan Elm District please save your magazine subscriptions for the students of Logan Elm High.

We will be holding a magazine drive the last week of September. Thank-You.

Sharon Sharrett, a senior, and Robert Bower, a junior, will journey to Ohio State University to attend Ohio Club Congress on Saturday, September 10, 1960. They gained this trip through 4-H participation in home, community, and county service.

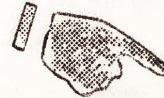
We hope they will have a lot of fun while gone and be ready to give us a full scale report as they return from there four-day vacation.

WHAT! NO NAME

Do you realize what a mess the world would be in today, if nobody had a name? How would you refer to anyone in particular?

This is the way we feel about the school paper. We are looking for suggestions from all students. This is your paper, so fill out the coupon on the back page with your name suggestion.

Don't be bashful--the paper needs a name.



SUBSCRIBE
NOW!!!

12 issues for \$1.00
Single copies 10¢
Bring the subscription order and your dollar to the concession booth before Friday.

≡ ○ ≡

NEW PRINCIPAL INTERVIEWED

Dear Editor:

We want to welcome the students, faculty, and anyone else that would care to eat with us in the cafeteria.

Since we are new also, we hope that the pupils will be patient, for we have much to learn. If we don't seem to notice you for a while as you come through the line; it could be that our mind is still back in the kitchen with our steam pot, pressure oven, and other kitchen utensils that we never had heard of until a few days ago.

We hope the students will try all the food on the menus, because they need it to make them healthy boys and girls, just as they need to attend all their classes to prepare them for a place in this wonderful country in which we live.

Many of the students we already know, but we like to think that the unfamiliar ones are friends and hope that soon we will know all students at Logan Elm High.

Mrs. Hinton
Mrs. Hedges
"Cooks"



The first singer ever to record a six inch record with a nine inch hole.

Mr. John Henn, the new principal of Logan Elm High School, is a very pleasant and hard working man. He has enjoyed his duties of organizing the school, but it kept him very busy. According to Mr. Henn, "The aim of Logan Elm High School is to provide experiences by which the pupil through participation, comes not only to a realization of his capabilities, but also to a sense of his responsibilities as an effective citizen in a democracy."

Circleville is the home of Mr. Henn, who has come to us from Mt. Sterling. He graduated from Tipp City High School and received his masters degree from Bowling Green State University in 1952. Mr. Henn is a history major, but has taught a variety of subjects, such as: history, American government, general business, world history, geography, and physical education. He has coached football and enjoys very much working with students.

Mr. Henn being 31 years of age, 6' tall, and weighing 195 lbs., enjoys football, basketball, water skiing, baseball, and camping.

The new principal and his wife, Barbara are happily married with three lovely daughters; Regina, 3; Melinda, 5; Rebecca, 7.

Mr. Henn is hoping that a strong Student Council will be organized. The colors and surname will be chosen by the students. Cheerleaders will be selected within the first two weeks of school.

The students, members of the faculty, and parents would like to welcome Mr. Henn as principal and hope he will enjoy his position.

WANTED - LIBRARIANS

Desk librarians are needed for periods 1, 2, 3, 4, and 5. Groups of 4-6 people will be organized for periods 6, 7, 8, and 9.

If you have a period open and are interested in library science, please contact Miss Wertman at your earliest opportunity. Regular credit may be earned for library work.

PAPER IS PUBLISHED

The paper of Logan Elm High School will be published once every three weeks by a staff selected from those interested in being a member.

Our publication will be sold at \$1.00 for 12 issues or 10¢ a copy during the school year.

For those students having returned their subscriptions, the paper will be put in their lockers. For those desiring to purchase the paper, it will be sold before school and during the noon hour in the Concession booth down from the main office.

Once Over Lightly
"Ma, do I have to wash my face?"

"Certainly!"
"Aw, why can't I just powder it like you do yours?"

PET PEEVE

We are happy to have Mr. Carl Burger as executive head of the new Logan Elm School District and we hope that his first year here will be a rewarding one.

Mr. Burger was born in Erie, Pennsylvania, but after his first two years of school his family decided to move to Columbus, Ohio, where he finished the remainder of his schooling including college at Ohio State University.

After going to Ohio State two years and studying civil engineering Mr. Burger decided to enter the teaching field because as he expressed it, "Engineers were standing in bread lines."

Mr. Burger has been in the teaching field 24 years and has taught at a great many places including the following: Bartlett, Ohio near Athens, Pickaway Twp. School, Barrett Junior High, and Austin High in Austin, Texas. After leaving Texas he came back to Mt. Sterling, Ohio, where he has been school executive until taking over his present job.

Mr. Burger and his wife Louise have three children. Donald who is fifteen is a sophomore, Steve who is a seventh grader, is twelve, and Jan, a second grader, is six.

OUR TEAM NEEDS SUPPORT

What would you think of a girl or boy who attended very few games, and when attending the games, literally tore the team apart? To me a person of this type is of the worst character.

Yet, how many pessimists will we have in the Logan Elm High School?

The three vital factors which are necessary for a successful team are:

1. practiced, confident, sportsman-like players--
2. boys that play together as a team--
3. an enthusiastic crowd that will back the team through victories and losses. We as spectators can do something about this third important factor.

As adults, your attendance is very necessary. For the younger generation falls very honored, if the older people support them to the utmost.

Now, for the qualified high school boys for reasons--some backed upon medical excuses and others backed on poor, flimsy excuses--that did not go out for football, please be good enough to go to the games and cheer the team to victory.

To the girls, we must say that they sometimes get carried away. Remember, too much yelling can distract the players and above all--watch the sportsmanship!

continued on page 4

ADULT PREJUDICE

The whole family enjoys water sports and particularly Mr. Burger who enjoys water skiing. They enjoy most of their water sports in Canada.

Mr. Burger's one great pet peeve is adult prejudices or jealousy among adults. He feels it is very childish and cannot condone it on anyone's part.

When asked to give his opinion of teenagers he said, "Basically I think they're very fine, and very wholesome. I blame the newspapers for the bad time given to teenagers."

He feels rock and roll is just temporary and is no different than the phase he went through at the same age attending the marathon dances or "around the clock dances."

Mr. Burger felt it was very challenging and a great opportunity to take over as executive head of Logan Elm School District and he anticipates many opportunities, challenges, and rewards in the coming year.

SEASON OPENS

An eleven man football squad will kick off our season on September 15th at B. I. S. in Lancaster.

This being the first time that any of the consolidated schools of the Logan Elm District have had an eleven man football squad, much support is needed by the squad and should be given by all.

When inquiring about how the squad looked this season coach Merrin said that they were progressing and he would be able to tell us more after the first game. He also told us that this year's season would be highlighted by an eighty-five mile trip to Mt. Vernon. There is a possibility that the team will be treated to a fine meal following this game. The squad is planning to go to Ohio State some Saturday.

Page 3

YOU ARE NEEDED

MR. HANES MUSIC HEAD

Are you interested in working on YOUR school paper?

Anyone can be a member of the school paper staff. A school paper should be a school project, not a project of one particular class; therefore, staff members will be selected from all classes.

It is actually an honor to be selected as a member of the school paper staff. In the near future we plan to organize a chapter of Quill and Scroll which is a national journalism honorary. Only members of the school paper staff are eligible to be selected for membership.

There are a large number of positions to be filled. The staff will be organized as follows:

- Editor-in-Chief
- Assistant Editor
- News Editor
- Reporters
- Sports Editor
- Reporters
- Feature Editor
- Writers
- Circulation Manager
- Assistants
- Production Manager
- Typists
- Assistants
- Art Editor
- Assistants

If you want the honor of being a part of your school paper, give the attached coupon to Mr. Drum or Janey Hockman before Thursday, September 13 th.

We need you and you need us!

Mr. Jerry Hanes, a native of Wellsburg, West Virginia, is the new vocal and instrumental music teacher of our new school. He attended Washington grade school in Wellsburg, and graduated from Wellsburg High School in 1956. A member of the 1960 graduating class of Ohio State, Mr. Hanes is 22 years old, 6'2" tall, and weighs 210 lbs. This is the first school in which Mr. Hanes, a bachelor, has taught. He majored in music in college and plays the clarinet.

According to Mr. Hanes, the band and orchestra will be organized during the first week of school. He also stated that no definite time schedule has been worked out, so that most of the rehearsing will be done individually or in an ensemble. Mr. Hanes said a few instruments for band and orchestra will be available for the students use. Representatives from several Columbus music stores will be coming to school in about three weeks to discuss rental plans for students interested in renting instruments for a few dollars a month.

The new music head disclosed that two separate classes will be held for chorus. The chorus members will meet on Monday, Wednesday, and Friday; Tuesday and Thursday will be devoted to voice section practice.

Music classes will temporarily be held in one room of the shop. The new music wing is expected to be ready for classes sometime between September 20 and October 1. A new Baldwin-Hamilton piano in walnut finish has been purchased for the music department and will be delivered in two or three weeks.

A variety of types of music will be sung by the chorus. Next week every student will be contacted and given a music survey, which is to enable music students to decide into which field of music they are best suited.

We are happy to have such a pleasant, patient, and interested man for our music teacher of Logan Elm High School.

SUMMER STAFF

- Editor Janey Hockman
- Reporters. Harriet Anderson
- Writers Janet Bower
- Typists . Beverly Hartranft
- Sharon Sharrett
- Brad Huffines
- Artist Tom Huffines
- Adviser Mr. Drum

SUPPORT NEEDED, Continued from page 3

As a new school, we want to build a great school spirit. This can be partially be accomplished, if the sports spectators will be more optimistic and believe that "Our Boys Will Shine Tonight".

BEAT

BJS

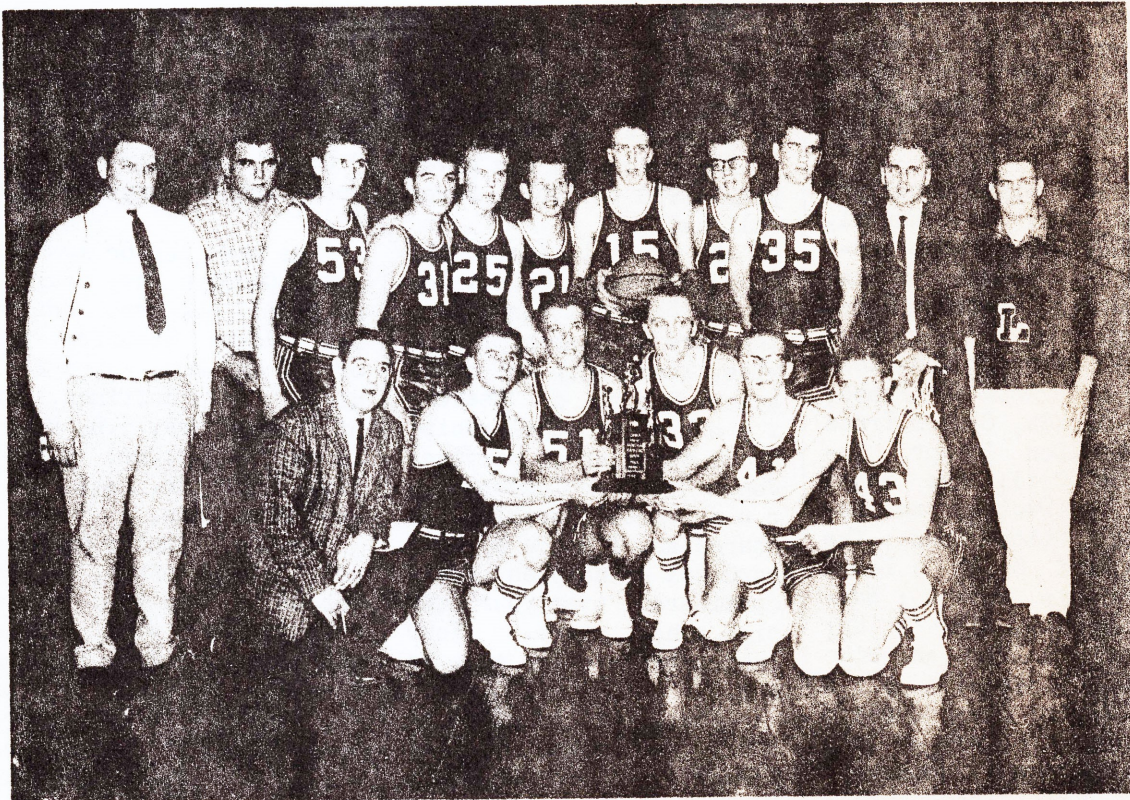
SEPTEMBER 15

THE ELM LOG

Volume 2, Number 14

March 29, 1962

BRAVES PLACE IN TOP EIGHT OF STATE!!



BRAVES LOSE HARD-FOUGHT GAME IN REGIONAL FINALS; FORT FRYE WINS BY ONE POINT

The Logan Elm Braves lost the final game of the 61-62 season to a tough Fort Frye team in a hard-fought game at Athens on March 17.

Chuck Spangler had 17 points and led in rebounds with 10. Gary "Icewater" Hardman followed with 15 points and 4 rebounds.

Hop Horn added 5 points and 6 rebounds. Captain Roger Clarke had 4 points and 7 rebounds, and Danny Hicks had 4 points and 9 rebounds.

The Braves led 10-9 at the end of the first quarter, but fell behind 25-19 at the half.

We pulled back within 2 points, 31-29 at the third canto, but lost by one point in a nip and tuck battle in the fourth quarter.

It was Fort Frye's 26th straight win this season and the closest game they have played in two years.

Throughout the rugged tournaments the boys were above reproach in both playing and conduct.

They have made Logan Elm proud to be called the "Home of the Braves".

Congratulations, team.

* * *

STUDENTS PLACE IN SCIENCE FAIR

The following science fair students were graded on Monday, March 12 at the Logan Elm School. Each of these students has had a project that he has been working on for the last few months.

Those with superior rating are: Jim Bowser, Water Works; Jim Dean, Insides Out; Diana Ankrom, Methods of Making and Shaping Glass; Jeanie Leist, Microcosm; Chuck McKenzie, The Composition of Batteries and Dry Cells.

Those with excellent rating are: Jim Harral, Cloud Chamber; Janet Bower, Paint; Anita Moats, The Beauty Within; Janet DeLong, Growing Microbes; Cheryl Hulse, Lunatics about Moon and Phase; Brent Rhoads, Common Trees of Ohio; Don Burger, Induction Coil; Mike Spangler, Attraction and Repulsion; Robert Stant, The Organ of Sight; Lewis Jordan, Air Brakes; Barbara Jenkins, Fill'er Up; Rodney Stauffer and Mike Burton, Discussing six Parts of the Body; Carolyn Law, The Discovery of Soap; Linda Trimmer, Transistor; Gene Jordan, Voice Cell; Leola Harmon, Crystallization; Sue Courtright, The Match; Sue Blue, Atoms and Molecules; Page Miller, Our Living Camera; Juanita Johnston, The Solar System; Robert Bower, Soil Value; Brenda List, Why Brush Your Teeth; Sharon Graves, Hearing; Tom Huffines, The Microphone; Larry Baird, Soft Water; Jim Wilson, Round Trip Ticket to the Moon; Bob Parker, Electromagnetism and its Uses.

Editor-in-chief	Sue Adkins
Assistant Editor	Carol Ginter
News Editor	Janet Bower
Assistant News Editor	Janice Riffel
Feature Editor	Leola Harmon
Assistant Feature Editor	Sandra Arledge
Sports Editor	Terry Garrett
Assistant Sports Editor	Larry Downs
Art Manager	Lana Fischer
Production Manager	Nancy Ayers
Circulation Manager	Mary Ann Morris
Advisor	Mr. Drum

NEW MEMBERS TAPPED INTO NATIONAL HONOR SOCIETY

The National Honor Society tapping service was held in the gymnasium on Tuesday, March 15, 1962. After the welcome by Dick Dean, the N.H.S. history was given by Sandra Grissom. Page Miller Presented a vocal solo, "I Believe", accompanied by Cheryl Hulse.

The roll call was given by Chuck Spangler for the years 1950 to 1961. Several past members answered the roll call.

As we all know, the four cardinal principles of the National Honor Society are scholarship, service, leadership and character. David Beavers spoke on scholarship; Chuck Spangler on service; Janet Bower on leadership; and Carol Torchick on character. These four cardinal principles are considered over your four high school years. Your scholastic average must be a 3.0.

After the tapping of the new members, the pledge of the National Honor Society was taken by the new members. Then they were presented with membership cards, lap pins and banquet tickets. The N.H.S. prayer was given by David Beavers. The Reverend Charles Jenkins gave the address. Following the address Sandra Grissom sang "The Lord's Prayer" accompanied by Mr. William Drum, who also played both the processional and the recessional.

The new senior members are: Carolyn Law, daughter of Mr. and Mrs. Walter Law; James Stauffer, son of Mr. and Mrs. James Stauffer; Brad Huffines, son of Mr. and Mrs. N.D. Huffines; Sue Adkins; who lives with Mr. and Mrs. Kester Mc Cain.

The new junior members are: Diana Ankrom, daughter of Mr. and Mrs. Allan Ankrom; Susan Blue, daughter of Mr. and Mrs. Chester Blue; Don Burger, Son of Mr. and Mrs. Carl Burger; James Harral, Son of Mr. and Mrs. Edgar Harral; Charles McKenzie, son of Mr. and Mrs. Lawrence McKenzie; and Robert Parker son of Mr. and Mrs. Walter Parker, Jr.

With the tapping of Charles McKenzie and James Harral, two complete families have been tapped into our chapter of N. H. S. Preceding Chuck are Barbara, Beverly, and Larry McKenzie and preceding Jim was Bill Harral.

A reception followed the ceremony.

Continued on page 3

FEATURE TEACHERS

Mrs. Jean Mills, one of our well-liked teachers, teaches mathematics and chemistry. She is always willing to help with any school activity. Mrs. Mills could usually be seen at a basketball game and was one of the best school supporters. Besides being helpful in school activities she is a good teacher. Mrs. Mills is always ready to help any student who doesn't understand.

Mrs. Mills attended Fairland High School. After graduating from Fairland she attended Marshall University and majored in mathematics. She is now on the Logan Elm faculty. We are proud to have her as one of our teachers.

N. H. S. CONTINUED

The Booster Club paid for all the supplies needed and Mrs. Donald Miller did all the lovely floral arrangements for the tables.

On each of the four smaller tables there was a blue candle with a yellow gladiola. The larger table had a center piece of yellow gladiola and blue iris.

MR. WEST

Mr. Dow West is a graduate of Chillicothe High School. After high school he attended Ohio State University and graduated in 1949. Mr. West is married and has two children. His wife's name is Charlotte. Chuck, who is eleven and Amy Jane, eight attend Saltcreek School. Before coming to Logan Elm to teach, Mr. West taught for awhile in the Navy. For a while Mr. West was engaged in home building in the Worthington-Arlington area.

Mr. West enjoys all sports. Some of his favorites are: football, basketball, boxing, hunting and fishing. He also enjoys reading non-fiction books.

He is the advisor of the Americanism council. He did a fine job as assistant football coach this year. In the one year Mr. West has been teaching here he has become well liked. He is always willing to help in any way he can and he is a very fine teacher.

Next Issue . . .

Mrs. Sampson, Mrs. Hamrick and Mr. Branham

DON'T FORGET THE BUS DRIVERS

A lot of people overlook the bus drivers. They have very important jobs even though they are seldom mentioned. They take on a great responsibility driving a bus load of school-aged children. They must have a lot of patience to drive a bus.

Bob Young lives at Route One, Circleville. He drives bus number three. He has two daughters aged ten and thirteen. Mr. Young's opinion of driving is "I enjoy driving the bus, because I like children. After a period of years, driving a bus grows on you."

Russel Andrews is the driver of bus number ten. He says that he drives about seventy-six miles a day. His address is Route One, Stoutsville. Mr. Andrews says "Driving a school bus requires great attention, as to operation, at all times. Safety must be kept in mind at all times, both as to traffic and mechanical condition. Discipline-too much noise can draw the drivers attention from the road."

Bus number five is driven by Carl Anderson. He has one son, Terry, who is sixteen. His address is Route Four, Circleville. He has driven for about eleven or twelve years. He says "I enjoy driving working for the school. There are a lot of wonderful kids on my bus and at Logan Elm which I enjoy hauling.

Lloyd Spung drives bus number twelve. He is the father of three girls and two boys. They range from five to sixteen. His address is Route Four Circleville. Mr. Spung's opinion is "It's all right I guess.

Bus number two is driven by Philip Wilson. He lives at Route One, Circleville. Mr. Wilson has two girls and one boy, ages twenty one, nineteen and ten. His opinion is "The work and safety of driving a school bus depends quite a bit on the behavior of the students. I would like to thank all my riders for their good conduct and cooperation in making my work easier."

Mr. Paul Congrove and Mr. Edgar Harral will be interviewed in the next edition of the paper.

FIND THE LOGAN ELM STUDENTS:

Freshman

___ust Plain sweet ___affy
 ___dorable ___ager
 ___utty ___unitic
 ___asy to get along with ___rnery
 ___rys anything once ___ice
 ___oofy

name of Freshman girl

Junior

___rainy ___est
 ___rnery ___thletic
 ___othersom ___owdy
 ___ids a lot
 ___ver teasing
 ___aises con-
 fusion often

name of junior boy

Senior

___ute ___weet
 ___andsome ___oisen
 ___nfailing ___thletic
 ___orny ___aughty
 ___oofy
 ___azy
 ___olithic
 ___ind (sometimes) ___owdy

RUSSIA'S TOP TV SHOWS

1. I Love Lenin
2. Do You Trust Your Comrade?
3. We've got the Secret
4. Poison to Person
5. Concentration (camp, that is)
6. This Was Your Life
7. Khrushchev Wants to Know
8. Have Sputnik, Will I Travel
9. Restless Gunner
10. American, Can't Stand

 LIST OF STANDARD INSULTS
 (For Nasty People Who
 can't think fast enough)

I've always admired your get up and go; why don't you?

As I look into your face, I see a face that needs looking into.

Let me call you sweetheart (the other names are unprintable)

You look like a million bucks: all green and wrinkled.

Don't try to save face, yours isn't worth it.

I don't dislike you, just the guy who introduced us.

Linda Trimmer

SHREDDED WIT

Note about the flag holders:

quote--

Made in the shop by Hop,
 Made in the pen by Ben.

First Cowboy: Why do you wear only one spur?

Second Cowboy: I figure if one side of the horse moves, the other side has to move, too.

Shaking with laughter: a mirth quake.

FEATURE TEACHERS

Mrs. Jean Mills, one of our well-liked teachers, teaches mathematics and chemistry. She is always willing to help with any school activity. Mrs. Mills could usually be seen at a basketball game and was one of the best school supporters. Besides being helpful in school activities she is a good teacher. Mrs. Mills is always ready to help any student who doesn't understand.

Mrs. Mills attended Fairland High School. After graduating from Fairland she attended Marshall University and majored in mathematics. She is now on the Logan Elm faculty. We are proud to have her as one of our teachers.

MR. WEST

Mr. Dow West is a graduate of Chillicothe High School. After high school he attended Ohio State University and graduated in 1949. Mr. West is married and has two children. His wife's name is Charlotte. Chuck, who is eleven and Amy Jane, eight attend Saltcreek School. Before coming to Logan Elm to teach, Mr. West taught for awhile in the Navy. For a while Mr. West was engaged in home building in the Worthington-Arlington area.

Mr. West enjoys all sports. Some of his favorites are: football, basketball, boxing, hunting and fishing. He also enjoys reading non-fiction books.

He is the advisor of the Americanism council. He did a fine job as assistant football coach this year. In the one year Mr. West has been teaching here he has become well liked. He is always willing to help in any way he can and he is a very fine teacher.

Next Issue . . .

Mrs. Sampson, Mrs. Hamrick and Mr. Branham

DON'T FORGET THE BUS DRIVERS

A lot of people overlook the bus drivers. They have very important jobs even though they are seldom mentioned. They take on a great responsibility driving a bus load of school-aged children. They must have a lot of patience to drive a bus.

Bob Young lives at Route One, Circleville. He drives bus number three. He has two daughters aged ten and thirteen. Mr. Young's opinion of driving is "I enjoy driving the bus, because I like children. After a period of years, driving a bus grows on you."

Russel Andrews is the driver of bus number ten. He says that he drives about seventy-six miles a day. His address is Route One, Stoutsville. Mr. Andrews says "Driving a school bus requires great attention, as to operation, at all times. Safety must be kept in mind at all times, both as to traffic and mechanical condition. Discipline-too much noise can draw the drivers attention from the road."

N. H. S. CONTINUED

The Booster Club paid for all the supplies needed and Mrs. Donald Miller did all the lovely floral arrangements for the tables.

On each of the four smaller tables there was a blue candle with a yellow gladiola. The larger table had a center piece of yellow gladiola and blue iris.

Bus number five is driven by Carl Anderson. He has one son, Terry, who is sixteen. His address is Route Four, Circleville. He has driven for about eleven or twelve years. He says "I enjoy driving working for the school. There are a lot of wonderful kids on my bus and at Logan Elm which I enjoy hauling.

Lloyd Spung drives bus number twelve. He is the father of three girls and two boys. They range from five to sixteen. His address is Route Four Circleville. Mr. Spung's opinion is "It's all right I guess.

Bus number two is driven by Philip Wilson. He lives at Route One, Circleville. Mr. Wilson has two girls and one boy, ages twenty one, nineteen and ten. His opinion is "The work and safety of driving a school bus depends quite a bit on the behavior of the students. I would like to thank all my riders for their good conduct and cooperation in making my work easier."

Mr. Paul Congrove and Mr. Edgar Harral will be interviewed in the next edition of the paper.

BRAVES BEAT FAIRLAND

In the first regional basketball game held at Athens the Logan Elm Braves led by Danny Hicks' 20 points and 15 rebounds put down a mighty Fairland team 58-53. Sharpshooter Charles Spangler also tallied 12 points and 6 big rebounds while playmaker Gary Hardman put in 13 points backed by 6 rebounds. Roger Clarke the guy with the big jump hit for 8 points matched by 8 rebounds while Dave "Hop" Horn added 4 points from the charity line and also pulled down 3 defensive rebounds.

As a team the Braves hit 62% on fouls compared to a 45% for Fairland, and pulled down 42 rebounds to a mere 28 for Fairland. In the floor game department Roger Clarke finished with a +8 and Charles Spangler finished with +7, a good game for any coach.

WANTED: TROPHY CASE

Now what are we going to do? Our trophy case is jam-packed and we haven't even started track and baseball: We have nine trophies to our credit and more coming in.

The trophies displayed at present are" Reserve League Championship, 1961-62; Walnut Invitational Christmas Tournament Championship, 1960; Pickaway County League Champions, 1961, Pickaway County Tournament Third Place, 1961; Pickaway County Baseball Runners-up, 1961; Pickaway County Track Runners-up, 1961; Pickaway County League Runners-up, 1962, Pickaway County League Runners-up, 1962; Pickaway Tournament Runners-up, 1962; District Champions, Class A, 1962. With sports teams like this, how about somebody thinking up an ingenious plan for expansion. Pretty good for two years, we'd say.

CONGRATULATIONS TO YOU.....

Cheryl Hulse, L. E. Freshman, for being chosen accompaniest for the county music festival, and to Pam Parker Pickaway, eighth grader, for being chosen junior high accompaniest.

To Chuck Spangler for being chosen for the All-Ohio Team.

To Carol Torchick and David Beavers for receiving the highest marks in the "Beer Book" tests given to L. E. Seniors.

Mr. Merrin, for receiving the paper staff's genuine zoo key.

To Mr. Drum for his temporary engagement. We say temporary because certain girls in his fourth period "class" are writing her a letter, which will probably end the whole thing right then and there.

BRAVES ARE HONORED GUESTS

The Braves were the honored guests of the fan club at the Jai-Lai Monday night. Following a four-course steak dinner Mr. E. E. Tillis delivered a short address. The team was then taken to Prairie Lanes where they were treated to bowling by the fan club.

BRAVES FINISH SEASON

The Logan Elm Braves finished the 61-62 season with a record of 20 wins and 4 losses. The losses were to Frankfort, Fort Frye, and two to Ashville.

Roger Clarke finished the year with the most assets with 58, followed by Gary Hardman and Chuck Spangler. Chuck led in recovery with 77, followed by Roger.

Dan Hicks led in rebounds with 248, backed by Roger and Chuck. Don Burger had a big 52% hitting, followed closely by Dan Hicks and Chuck.

Chuck also led at the charity stripe, with 77%, followed by Hop Horn and Terry Anderson.

Spangler finished his senior year with a total of 422 points, Danny finished with 266, Roger with 216, and Hop had 175.

The Braves finished with an impressive record winning 20 and losing 4, and wound up as one of the state's top eight teams.

Congratulations to the Braves and Mr. Merrin.

SHORTHAND STUDENTS PASS OFFICIAL GREGG TESTS

These students have passed the official Gregg Shorthand tests at the following speeds:
 80 wpm for three minutes-- Patti Martin, Beverly Crosby, Creola Gose, Carolyn Webb and Judy Jenkins
 60 wpm for five minutes-- Beverly Crosby, Creola Gose, Judy Jenkins, Carol Ginther, Carolyn Webb, Sharon Lauerman
 60 wpm for three minutes-- Patti Martin, Celia Lowery, Veronda Lowery, and Janet Johnson.

IF YOU HAD A ZOOKEY, WHAT WOULD YOU DO WITH IT?

Glenn Reeser	Drink it	Mr. West	Put it in a box, tie it with a ribbon, and throw it in the deep, blue sea.
Pete Jordan	Eat it		I need it
Carol Torchick	Put it in my locker	Norma Huffer	Use it to kill insects
Saundra Van Fossen	Take it home	Kenny Moss	Drown it
Ruth Huffer	Play with it	Dean Wolfe	Sit up all night and watch it
Bonnie Riffel	Give to Kenny Moss	Benny Girffith	Put it on my car
Betty Jo Adams	Will it to the juniors		Put it on my valley ball team.
Brent Bowman	Give it to Mr. Henn	Gene Congrove	Give it to the students
Mrs. Sampson	Put it on my table	Dick Shaw	Give it to sheryl
Kenny Arnold	Sit up all night with it		Make a pizza out of it.
Larry Pontius	Eat it	Mr. Henn	Give it to Merrin.
David Van Fossen	Keep it forever and ever	Fred Stumbo	Give it to my girl.
		Larry Moss	I think I would drink it
Carolyn Van Fossen	Have it for supper	Richard Dean	Trade it off
Dorothy Stump	Throw it away	Terry Vanhoose	Give it to Mr. Bramham
Paul Spung	Watch t. v. with it	Dan Hicks	Take it home and wash it
Gary Hardman	Fill it full of clothes		What in the world's a zookey
		Mrs. Hedges	Hide it
Jim Hicks	Name an animal after it	Frank Martin	Put it on an island with girls
		Charles Parker	Sell it to Jim Wilson
Marcella Glenn	Go to bed with it	Miss Delong	Burn it up
Mr. Merrin	Cut it in 12 pieces and feed it to the basketball team.	Steve Benner	Give it to Peggy Summers
		Mike Clifton	Keep it as a gook luck charm
Connie Holbrook	Throw it away		Eat it
Jim Dean	Send it to the moon, maybe; depending on whether it is a man or a women	Connie Dunkle	Give it to Bev
		Larry Grissom	Put it on my Chevy
		Larry Radabaugh	Box it up and send it away
Roger Clarke	Look at my girl friend with it	Gene Massie	Put it in a cage
			Train it
Lenny Hardman	Play with it	Veronda Lowery	Put it in my pocket book
Cecil Hanes	Give it to the teachers	Jim Pennington	Let Lennie out
		Bill Woods	Start a zoo for Biology
Linda Dahl	Commit harri carri	Lester Betz	Swim in it
Carol Johnson	We will die together		Feed it to my motorcycle
Jim Rooker	Turn Mr. Merrin loose	Mike Abbott	Give it to Jackie E.
Brad Huffines	Give my share back to the coach	Mrs. Elsea	Give it to Mr. West
		Jean Strous	Sleep on it
Bobbie Blue	wear it	Janice Riffel	
Kenny Kuhn	Be afraid of it	Mr. Pontius	
Danny Ramsey	Sell it	Larry Arnold	
Larry Downs	play it	Kay Adams	
Neil Wolfe	Put it on the ashville team.	Janet Bower	
		Glenn Fowler	
Mrs. Hinton	Give it to my husband as a pet	Don Burger	
Carl Dixon	Bury it		
Ronnie Webb	Kill it		
Chuck Spangler	Lock Sue A. and Nancy A. up in a cage		
Mr. Drum	Lock the school		

A few bright people, such as Charles Derexson, Carolyn Crosby, and Mr. Pontius, knew exactly what to do with it open a zoo! what else would you do with a ZOO KEY?



Volume II, Number 18

May 21, 1962

CLASS OF '62 GRADUATES 48 MEMBERS

DR. HAHN SPEAKS AT COMMENCEMENT

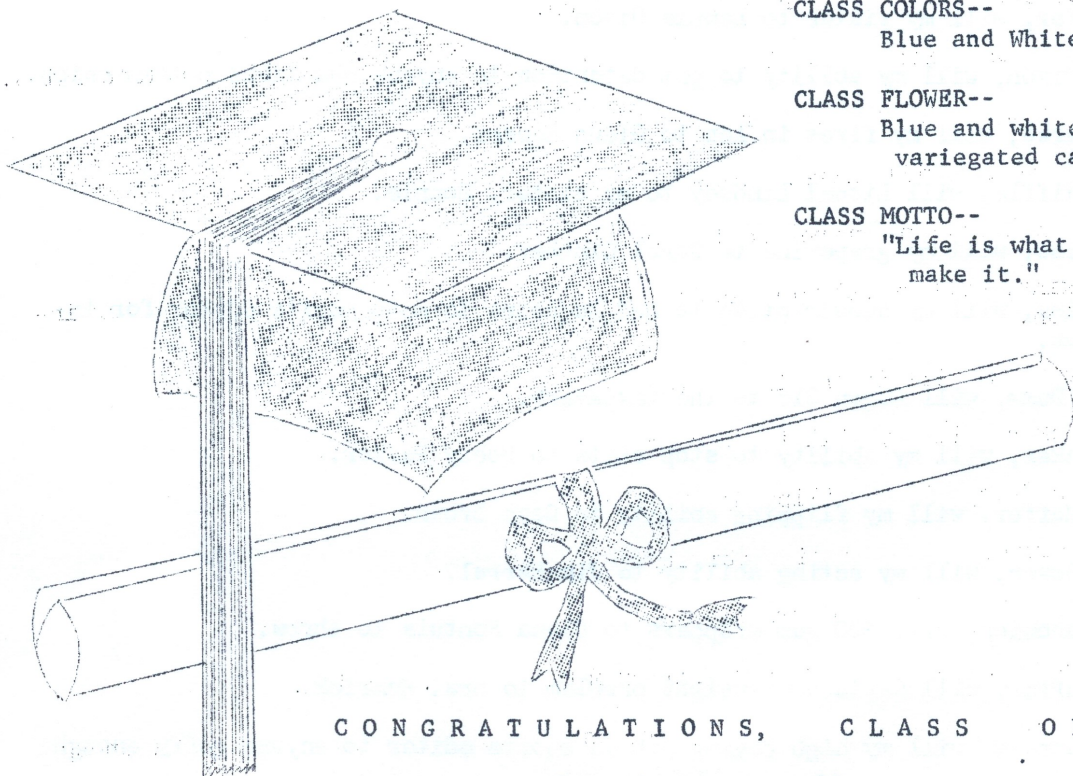
Dr. Harvey Hahn of Cleveland, Ohio will be the Commencement speaker for the 1962 graduating class of Logan Elm High School.

Dr. Hahn prepared for a business career with a degree in Business Administration. He then entered the Seminary in Dayton, where he took his present church as a student pastor at the same time he entered the Seminary. After graduation he continued in this same pastorate and has been the pastor since 1929. Dr. Hahn has served on several boards and has had past positions with several organizations. He has also received many citations from various organizations.

PAUL BROWN BRINGS BACCALAUREATE MESSAGE

The Reverend Paul Brown of the E. U. B. Church in Logan, Ohio, presented the Baccalaureate sermon to Logan Elm's second graduating class on May 20.

Rev. Brown spoke on "Delightful Achievements in Spite of Deadly Arrows."



CLASS COLORS--
Blue and White

CLASS FLOWER--
Blue and white
variegated carnation

CLASS MOTTO--
"Life is what you
make it."

CONGRATULATIONS, CLASS OF '62

from the paper staff

1962 CLASS WILL

We, the Senior Class of 1962, being of sound mind and memory, do hereby declare this to be our last will and testament.

- I, Roger Clarke, will to Jim Martindale my muscles that he so badly needs.
- I, Don Graves, will my quiet ways to Lester Hayslip.
- I, Betty Jo Adams, will my ability to get along with teachers to anyone who needs it.
- I, Janet Bower, will my nickname "bedbug" to Terry Anderson because he likes it so much.
- I, David Beavers, will my height to Danny Hicks.
- I, Peggy Marion, will my shyness to Pat Keller.
- I, Mary Ann Morris, will my ABC gum to anyone who can get by with it.
- I, Mike Abbott, will my Ford to anyone who wants it, but I don't think anyone does.
- I, Gene Congrove, will to Chuck Holland my seat in front of Mr. Merrin in senior math.
- I, Hop Horn, will my very fine volley ball team to Falcoon Huffines.
- I, Sandy Grissom, will my middle name (Kay) to Mr. Drum who is in desperate need of one.
- I, Ray Huffer, will my sister to Lennie Dixon.
- I, Lennie Dixon, will my ability to get detention to anyone who likes potato chips.
- I, Larry Parks, will my fires in lab to Glenn Reeser.
- I, Connie Riffle, will Lionel Lindsey to my sister, Bonnie.
- I, Patsy Moss, will my grapevine to Carol Ginther.
- I, Sue Adkins, will my subscription to Mad Magazine to next year's editor for inspiration.
- I, Shirley Dumm, will Logan Elm to the taxpayers.
- I, Danny Baker, will my ability to stop shots to Bobby Parker.
- I, Ronnie Huffer, will my flipping ability to Dave Brown.
- I, Robert Bower, will my acting ability to Jim Harral.
- I, Carol Torchick, will 500 gum wrappers to Diana Pontuis to throw.
- I, Norma Huffer, will Ray's underweight problem to Mrs. Hamrick.
- I, Terry Garrett, will my high paying job as sports editor to anyone goffy enough to take it.

CLASS WILL, Continued

- I, Chuck Spangler, will the remainder of my lab partner to Arnie Gabriel so he can finish her off.
- I, Benny Griffith, will my basketball team to Jim Pennington.
- I, Nancy Ayers, will my ability to tear up the mimeograph machine to next year's newspaper production manager.
- I, Dick Dean, will my seat in Mrs. Mill's classes to Terry Anderson.
- I, Gene Jordan, will my harem in sociology to any lucky junior boy. (Only boy with 10 girls.)
- I, Roberta Adams, will my ability to be absent from school to George Hamilton.
- I, Jerry Knece, will my 70 hours in detention to Chuck McKenzie.
- I, Kenny Moss, will my time spent in "conference" in the conference room to a junior.
- I, Jim Stauffer, will my place in the junior homeroom doorways to Jim Martindale.
- I, George Miller, will my cheerful disposition to Mr. Branham.
- I, Dick Shaw, will my good looks to Larry Radabaugh.
- I, Kay Adams, will my curly hair to Gary Hardman.
- I, John Baker, will my office practice set to Mr. Drum.
- I, Paul Bower, will my physique to Carl Dixon.
- I, Jo Ann Dresbach, will my seat in detention to anyone who can occupy it as often as I.
- I, Jackie Evans, will my driving ability to Bill Woods, because he needs it.
- I, Lennie Hardman, will my irresistible charms to Gary.
- I, Jim Hoover, will my love of school to Charles Derexson.
- I, Brad Huffines, will my ability to find our what is going on to anyone desiring to join the F. B. I.
- I, Vernon Larie, will my ability to get out of classes and wander around to some innocent-looking junior.
- I, Carolyn Law, will my hair to Mr. Henn.
- I, Jim Rooker, will my good behavior to Don Burger.
- I, Dean Wolfe, will my cigarettes to Glenn Fowler.

We, the Senior Class of 1962, do hereby bequeath all our Senior rights and privileges to the Junior Class of 1962.

PROPHECY FOR THE CLASS OF 1962

One day while cruising through the stratosphere in our flying saucer, Tom Huffines, Don Burger, and I ventured to return to the islands to see how things had been progressing for the past twenty five years.

As we approached the space station, we were greeted by the hostess, Mary Ann Morris, who told us she had always wanted to be way out. Our flying saucer was parked by Parks's Parking Service, owned by Larry Parks. We told Larry that we wanted our saucer over-hauled in Jumbo's Speed Shop. He told us we should contact the proprietor, Big Paul Bower, for immediate service. After contacting Jumbo, we went on down the street to the Space Restaurant, which was operated by Peggy Marion and Roberta Adams. As we waited to be served, we read the Cosmic Gazette, edited by Sue Adkins, whose motto is "To Make The Baddest More Better." While reading the Sports Section, we noted that Chuck Spangler's basketball team, the Garlem Hobo-trotters, whose techniques were patterned by the retired Keith Merrin, had a perfect season of 0 and 25. We also saw that new plans were being made for rebuilding the space station, which was literally falling apart. The designer, David Beavers, credits his failures to the late World War III Veteran, Mrs. Jean Mills.

The waitress, who had recently won the Waitress of the Space contest, was none other than Janet Bower. She gave us the menu and told us the food was prepared by the Great Chef, Genet Jordan. After we finished our lunch, we went to the Physical Fitness Gym, operated by Jim "The Weight Mover" Hoover, who was there working out with weights. Benny Griffith was there trying to put on a few extra pounds. Benny told us he had the job of reading Mother Goose Poetry to all the space monkeys.

We then proceeded for a cool swim in the pool, owned by the high diver of the 21 Century, Patsy Moss. The life guard in charge was Kay Adams, who received his training from Jim "The Fish" Rooker.

as narrated by Bob Parker
Jim's latest accomplishment was riding a Polaris Missile.

On the way back to the ship, we stopped to get a hair cut and manicure at the H and H Barber Shop. Dave Horn was clipping hair and Norma Huffer was manicuring. Their motto is "If you are running from a cop, change your disguise with a hair cut by Hop."

While walking down the street, we saw Ray Huffer go by, chauffeured in his Cadillac saucer Lac since he had recently been named Mr. Universe.

We hopped in our souped up Saucer and headed for the islands. As we flipped our television on, we saw the finals at the Indianapolis 500. As the winners crossed the finish line it was called a dead heat between Mike Abbot in a 1987, 870 H. P., Chevy and George Miller in his 1987, 850 H. P. Ford. Tom flicked the channel over to the "You Asked For It Show," where Jo Ann Dresbach and Gene Congrove were on their 10th day of the National Finals of the Marathon Twist Contest. The show was interrupted by Jerry "The Flash" Knece, the outer space patrolman, telling everyone to be on the look out for Dean Wolfe, alias Bevo, who had just hiked John Glenn's space Capsule from the Smithsonian Institute. Don shut off the television, for we were approaching the islands. As we dropped down for the landing, we saw Veron Larie working on the new run way. We noticed a peculiar thing about Veron. He was practicing to be an astronaut with his toy Rem-co. Rocket set. He was shooting down paper airplanes that he had made. Our space ship then went partially out of control and we ran over Robert Bower, who was flagging us in. The emergency crew, Leonard Dixon and Ronnie Huffer, came screaming over and quickly patched up our saucer. After everything was brought under control, we left our saucer and headed for the new check-up hospital, where Brad "The Oldest Doc" Huffines and his nurse Jackie Evans were on Active duty. The Doc said he had just delivered quintet girls to the former

Sandra Grissom. Her husband, Donald Graves had one comment, "How am I going to break this to my ten boys?"

As we left the hospital, we saw a friek accident. Jim Stauffer and Kenny Moss were drag racing and had a head-on collision. The police cruiser, driven by Dan Baker, came quickly and since both boys had only minor injuries of 2 broken legs and a few crushed ribs, he took them to the police station for a full report for Police Queen Carol Torchick. We noticed the jail was fully barred to keep the crooks out.

We saw a familiar face walking up the street. It was Larry "The Bum" Arnold. He told us things hadn't been too good for the stock market had crashed and he was only clearing a million dollars a month. He suggested we should go to the Olympics at Thatcheropolis.

As we reached the Olympic Games we saw Dick "The Hummingbird" Dean, who had recently devised a new type of pole vault pole. He called his new invention the Flexo-Aluminum pole. Dick wasn't doing too well because of strong winds and was only going 33 feet. It started to rain so we left the olympics and went to a movie at the Law Opera House owned by the great opera singer Carolyn Law. The girl who was selling tickets was Shirley "The Short Change Artist" Dumm. The ticket taker was Betty Jo Adams. Betty Jo takes tickets, watches, billfolds, pocket books, jewelry, and also loose change. The usher John "The Fat" Baker

CLASS HISTORY

by Janet Bower

On September 12, 1960, 52 members entered the junior class of Logan Elm High School. The two homeroom teachers were Mrs. Mills and Mr. Branham. The student Council members were Jim Stauffer, Roger Calrke, and Carol Torchick. Our classes were led by Dick Dean and Roger Clarke, presidents.

Members of the football team were: Lenny, Paul, Benny, Roger, Dick. Members of the basketball team were: Roger, Lenny, Chuck, Brad, Dick. Track members were: Chuck and Roger. The baseball squad included: Lenny, Larry, Roger, Terry, Dave, Chuck, Danny, Dick, Benny, and Larry Arnold.

Showed us to our seats. John learned to see in the dark during World War III, when he was our leading war sniper.

The movie was about to start when Connie Riffle came running down the isles yelling Fire! Fire! Fire! We all got a good laugh at that crazy maniac until we saw Terry Garrett walk in with a fire hose. Terry turned on the hose and in 25 seconds had everybody sprayed out of the theater. After we picked ourselves up out of the gutter, Nancy Ayers "The Can Can Dancer of the Theater" said the fire had been started by a little boy playing Cowboys and Indians. The little boy was Dick Shaw and it seemed that a spark from his cap gun had set the place on fire.

After talking to Nancy we walked along the streets a couple of hours to give our clothes a chance to dry. While walking down the street we saw a man running and jumping all the parking meters. Just as we thought it was Roger "Leap Frog" Clarke who was getting in shape for the cross-country fox drive. We asked Roger what happened to his old friend Lenny Hardman. Roger said Lenny had a job with the Pennsylvania Railroad driving steel spikes in the rail-road ties.

By this time our clothes were dry and we thought it was time to return to our space saucer. As we landed in Bower City, Don commented how well the class of '62 had done when really he had expected the class of '63 to make the most achievement.

Jerry Knece was second place winner in the safe-driving Roadeo. Patsy Moss was reserve cheerleader. Honor Society members were Carol, Sandra, Janet, David, Dick, Chuck. Quill and Scroll members included Carol, Sue, Jackie, and Janet.

This year, 48 seniors will be graduated from Logan Elm High School. The homeroom teachers were Mrs. Chilcote and Mr. Pontius. Class presidents were Dick Dean and Roger Clarke. Student Council members were Jim Stauffer and Roger, who was elected the president of the council.

The D.A.R. good citizenship award was given to Sue. The Homecoming
Continued on Page 5

SENIORS' PLANS FOR THE FUTURE

Mike Abbott	carpenter	Leonard Hardman	college
Betty Jo Adams	cosmotology	Jim Hoover	undecided
Kay Adams	undecided	David Horn	college
Roberta Adams	job	Norma Huffer	navy
Susan Adkins	college, Malone	Ray Huffer	DuPont
Larry Arnold	armed services	Ronnie Huffer	navy
Nancy Ayers	college, Malone	Brad Huffines	college, O. U.
James Baker	navy	Gene Jordan	college, O. U.
John Baker	civil service work	Jerry Knece	job
David Beavers	college, O. U.	Vernon Larie	navy
Janet Bower	college, O. U.	Carolyn Law	college
Paul Bower	trade school	Peggy Marion	job
Robert Bower	college, O. S. U.	George Miller	farm
Roger Clarke	undecided	Mary Morris	navy
Russell Congrove	work	Kenneth Moss	marines
Richard Dean	undecided	Patsy Moss	Business School, C.B.U.
Leonard Dixon	navy	Larry Parks	college, O.U.
Jo Ann Dresbach	cosmotology	Connie Riffle	G.E.
Shirley Dumm	work	James Rooker	college, O.U.
Jacqueline Evans	Business School, C.B.U.	Richard Shaw	farm
Terry Garrett	barber college	Chuck Spangler	college
Donald Graves	college, O. U.	James Stauffer	undecided
Benny Griffith	college	Carol Torchick	Business School, C.B.U.
Sandra Grissom	Business School, C.B.U.	Dean Wolfe	farm

CLASS HISTORY, Continued

Queen was Carol Torchick. The senior attendant was Norma Huffer. New Honor Society members were Brad, Carolyn, and Jim Stauffer.

Track members included Dick Shaw, Lenny, Gene, Roger, Chuck, and Dick Dean. Baseball members were: Chuck, Danny Larry, Terry, Dave, Gene, Dick. The senior stars of the basketball team were Chuck, Lenny, Dave, Brad, Roger. Football players were Dick Shaw, Dick Dean, Lenny Gene, Paul, Roger.

Brad Huffines was the able editor of the Skandha. Sue Adkins was the hard working editor of the Elm Log. Carol Torchick had the distinctive honor of being chosen Miss Logan Elm and then the high honor of being chosen Miss Pumpkin Show. Chuck Spangler was chosen for the All-Ohio basketball team, which was a very high honor. Roger, Chuck, and Dave were named to the All-County basketball team at the close of tournament play.

In the time since the junior classes from Seltcreek and Pickaway came to Logan Elm, many close and lasting friendships have been formed, and now few of us remember who came from where. We are all proud to be members of the class of '62.

FACULTY TRIBUTE TO 62 SENIORS

Mrs. Sampson: They have been very cooperative, and I shall miss them.

Miss Wertman: They are delightful.

Mr. West: I believe the class of 62 has established a goal for the class of 63.

Rev. Jenkins: I am impressed with their courtesy.

Mr. Branham: I am grateful to them for giving me a middle name.

Mrs. Hamrick: The seniors are like life . . . spicy.

Mrs. Mills: They will be missed by all.

Mr. Pontius: They have always been honest in my classes.

Mr. Merrin: They are the best senior class I have ever been associated with.

Mrs. Chilcote: They are respectful.

Miss DeLong: It's been nice knowing them.

Mr. Drum: They will always hold a special place in my memory.

Logan Elm High School Valedictorians and Salutatorians

YEAR	VALEDICTORIANS	SALUTATORIANS
1961	Ann Smith	Harriet Anderson
1962	David Beavers	Sandra Grissom
1963	Robert Parker	James Harral Charles McKenzie
1964	Arnold Gabriel	Glenn Reeser
1965	Brenda List	Cheryl Hulse Barbara Jenkins Judith Short
1966	Daryl Reichelderfer	Elaine Tatman
1967	Thomas Smith	Paula Weaver
1968	Lorna Poling	Connie Jones
1969	Shelia Anderson	Brenda Mills
1970	Lynette Justice	Debby Whaley
1971	Betty Frazier	Beth Rooker
1972	Jeff Young	Louis Edsell
1973	Carla Hobbie	Pam Kempton
1974	Bonnie Bolender	Thomas Shaw Sheryl Dietzel
1975	Saundra Strawser Clark Brent Smith	Pam Martin
1976	Barbara Bolender Bruce DeBruin Joe Disbennett	Keith Dumm
1977	Rose Marie Hoffman Debra Lawson	Cathy Watson
1978	David Cain Jerry Scanlan Cheryl Hawkins Kim Strous	Michaelle Carroll
1979	Carl DeBruin Kamela Poling	Joe Baehr
1980	Stacey Brown Terri O'Hara	Patrick Hupp
1981	Kim Farmer	Michael Wolford
1982	Mark Conrad David Eastman Caroline Grooms Carri Lutz Lori Pritchard Tammy Pritchard Darlene Tisdale	Keith Leffler Kelly Leffler
1983	Matthew Mills Kathy Hupp	Seth Jones
1984	Eugene DeBruin	Kevin O'Hara

Year	VALEDICTORIANS	SALUTATORIANS
1985	Kim Eitel Lea Higginbotham Greg Scanlan	Crissi Lutz
1986	Tina Forester	Trent DeBruin
1987	Rick Bell Karen Eitel	Krista Hershey
1988	Jackie Jones	Julia Lutz
1989	Steve Scanlan	John Roth
1990	Nicole Carmean	Ginny Gebhart
1991	Brenda Ebert Jessica Rader	Nicole Geron
1992	Brian Beavers	R. Chris Nelson
1993	Laura Wilson Angie DeMint	Mark DeBruin
1994	Mary Theresa Moore	Greg Dresbach
1995	Amanda Church Keryn Lemieux	Stacey Leist
1996	Cheryl Webb	Bethany Beavers
1997	Heather Strous	Jeff Montgomery
1998	C. Jason Beavers	Jessica Hayes
1999	Travis Elliott	Rachel Fast
2000	Dustin Stevens	Joshua Weaver
2001	Austin Kleon	Anthony Halley
2002	Jonathan Roe	Jasilyn Weaver
2003	Matthew Ely	Nathan Bingman Holly Jordan
2004	David Cooke	Austin Salyers
2005	Mindy Agin Daniel Davis Erin Orndorff Elizabeth Yeager	Shelley Boldoser
2006	James Gilmer	Zachary Thomas
2007	David Fogler Emily Jones Natalie Riegel	Michael Eisman
2008	Jarren Thomas Daniel Johnston Martin Dalefield	Janie Waidelich Marena Current Emily Eickholt
2009	Rebekah Joy Linton Sarah DeLong Melissa Michelle Martin	Alyssa Marie Grolle
2010	Alyvia Clark	Marvane Kimbler
2011	Bailey Dye	Emily Robinson
2012	Jessica Nicole DeLong	Clay Edward Hartzler

Logan Elm High School Valedictorians and Salutatorians

YEAR	VALEDICTORIANS	SALUTATORIANS
2013	Dorothy Faris Drew Hatter Makayla Martin Elizabeth Peters Kelly Speirs Nikki Young	Oliva Boldoser
2014	Adam Agosta Taylor Riddle	Patrick Mascari
2015	Trey Merrill Alyssia Parson	Joshua Thomas
2016	Nicki Franks	Nash Crosby
2017	Justin Tyler Boldoser	Hugh Carstensen
2018	Sarah Julian	Jeffrey Rob
2019	Madaline Amspaugh Lynne Dale Hannah Thompson	Abigail McDonald
2020	Erica Dale	Emma Lands
2021	Allyson Cotton	Grace Engel, Emma McKibben, Sydney Spires
2022	Annie Karshner Josielyn Martin	Adriana Collier Wylie Lytle
2023	Kinley Whited	Casie Gaskin Aurora O'Phelan Jude Schaal

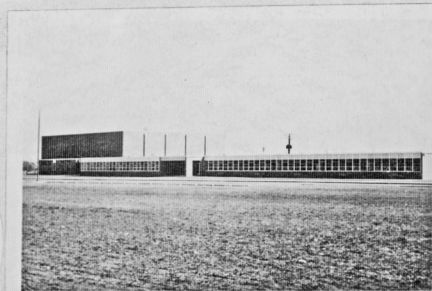
This is the complete list for the old building. The class of 2024 will be the first in the new building and will continue the tradition of graduating outstanding students.



LOGAN ELM HIGH SCHOOL

CLASS

1961



JOHN J. HENN PRES.



WILLIAM DRUM FAC.



ALICE DE LONG FAC.



JEANNETTE CHILOTE FAC.



GOBLE BRANHAM FAC.



MARCUS ALBRIGHT FAC.



CAROL ALBRIGHT FAC.



MILDRED WERTMAN FAC.



ELIZABETH UMSTED FAC.



DOROTHY SAMPSON FAC.



VICTOR PONTIUS FAC.



JEAN MILLS FAC.



KEITH MERRIN FAC.



JERRY HANES FAC.



DOROTHY HAMRICK FAC.



LINDA ROSE BOSWORTH



RITA BARTHOLOMEW



BENNY VALENTINE PRES. AT LARGE



DALE WOLFE TREAS.



JUDY ARCHER SEC.



ANNE SMITH V. PRES.



WILLIAM W. PARKER PRES.



ERNEST ARLEY JR.



MARIET ANDERSON



RALPH E. ENGLAND



CLARA J. DUET



PATRICIA L. DOWNS



EUGENE DEAN



FAYE CONGROVE



GEORGE O. CLIFTON



ROBERT BOWSER



PAUL EUGENE BOWMAN



BEVERLY HARTMAN



ROBERT HART



EARL HADDOCK



ROBERT L. GOSS



JOSEPH E. GOELLER



CHRISTINA GILDERSLEEVE



PEGGY GIFFORD



SAMUEL R. GARRETT



DAMON FOX



LARRY J. MC KENZIE



GERALD MARTIN



JAMES R. LAVECK



MELVIN E. HUFFMAN



JANE E. HOCKMAN



JAMES F. HINTON



JO MARIE HAYES



ORMAN HARTMAN



JERRY ALLEN SPANGLER



KATHRYN E. SHELFHAM



SHARON A. SHARRETT



RONNIE E. RIFFLE



JOHN D. PONTIUS



SHARON NEFF



NED M. MUSSELMAN



CHARLES P. MOWERY



DONALD D. MILLER



BEVERLY WOOLLEY



NORMAN WILSON



LARRY WILLIAMS



ROBERT LEE WILLET



DIANA WETZEL



ROBERT WEAVER



REBECCA A. VAN FOSSEN



KENNETH R. VALENTINE



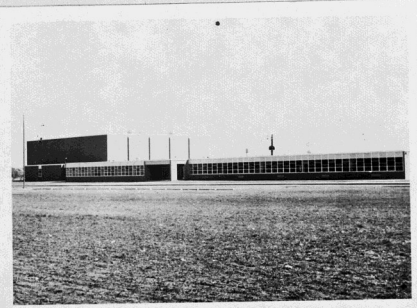
GROVER E. TEMPLE

MONROSE STUDIO

LOGAN ELM HIGH SCHOOL

CLASS

1962



CARL S. BURGER, EXEC. HEAD



JOHN J. HENN, PRIN.



GOBLE BRANHAM, FAC.



JEANNETTE CHILCOTE, FAC.



ALICE DE LONG, FAC.



WILLIAM DRUM, FAC.



CHARLES JENKINS, FAC.



DOROTHY HAMRICK, FAC.



JERRY HAINES, FAC.



KEITH MERRIN, FAC.



JEAN MILLS, FAC.



VICTOR PONTIUS, FAC.



DOROTHY SAMPSON, FAC.



MILDRED WERTMAN, FAC.



DON O. WEST, FAC.



DON O. WEST, FAC.



PETER L. CLARKE, PRESS.



RICHARD A. DEAN, PRESS.



LARRY JAMES ARNOLD, PRESS.



JANET ROSALIE BOWER, PRESS.



DAVID ADDISON HORN, PRESS.



JERRY D. KNEEB, PRESS.



KENNETH E. MOSS, PRESS.



JAMES A. STAUFFER, PRESS.



GEORGE W. MILLER, STAFF.



RICHARD PHILLIP SHAW, STAFF.



MICHAEL B. ABBOTT



BETTY JO ADAMS



KAY ADAMS



ROBERTA KAY AUZIS



SUSAN PATRICIA ATKINS



NANCY LOUISE AYERS



JAMES D. BAKER



JOHN KENNETH BAKER



DAVID LEE BEAVERS



PAUL E. BOWER, JR.



ROBERT L. BOWER



RUSSELL EUGENE CONGROVE, JR.



LEONARD LEE DIXON



JO ANN DRESBACH



SHIRLEY LEE DUMM



JACQUELINE EVANS



TERRY LEE GARRETT



DONALD EUGENE GRAVES



EDGAR B. GRIFFITH



SANDRA KAY GRISSON



LEONARD F. HARDMAN



JAMES HOOVER



NORMA JEAN HUFFER



RAY EUGENE HUFFER



MARY ANN MORRIS



RONNIE H. HUFFER



BRADFORD D. HUFFINES



GENE RAYMOND JORDAN



VERNON L. LARIE



CAROLYN V. LAW



PEGGY MARION



PATRICIA ANN MOSS



LARRY R. PARKS



CONNIE M. RIEPLE



JAMES DORSET ROOKER



CHARLES A. SPANGLER



CAROL ANN TORCHICK



DEAN F. WOLFE

MONTROSE
STUDIO
COLUMBUS, OHIO



Elson Yetter-Fac.



Alice De Long-Fac.



Keith Merrin-Fac.



Jenette Chilcote-Fac.



Dow West-Fac.



Jean Mills-Fac.



Goble Brankam-Fac.



Virginia Courtright-Fac.



Gerall Leist-Fac.



Dorothy Sampson-Fac.



Mildred Wertman-Fac.



John Ilem
Co-Ordinator

Logan Elm High School

Class of 1963



Dorothy Hanrich-Fac.



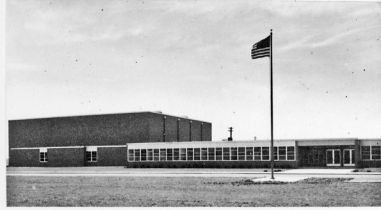
Robert Petty-Fac.



Sue Ann Courtright



Lester Lee Haystip



Jack Edward Huffman



Diana Jean Anbron



Carol Lee Ginther



Robert Eugene Parker
Treas.



Judith Elaine Search
Sec.



Charles E. McKenzie
V. Pres.



Terry Anderson-Pres.



Patricia James Russell
Sec.



Charles I. Holland
Sgt. at Arms



Daniel Hicks
Sgt. at Arms



Linda L. Sbyers



Ronald Edward McManes



Janet M. Hunt



Lester Betts



Carolyn Sue Webb



James E. Martinale



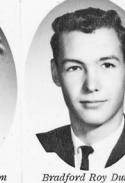
W. Maxine Streber



James William Dean



Janet Louise Johnson



Bradford Roy Double



Veronda Lea Lowery



William F. Spiller



Janice A. Law



Joseph Lloyd Speakman



Sharon Ann Lauerman



James Mitchell Harvat



Judith M. King



Ronald Eldon Arledge



Leola M. Harmon



Larry David Baird



Charles W. Wood



Charlotte M. Barnett



Franklin Wayne Martin



Creola Mae Gose



Bradley Filmore Hart



Judith Irene Jenkins



Charles W. Wiggins



Edith Alice Adams



Thomas D. Lavech



Patricia L. Martin



William Eugene Bitzer



Gerald L. Hinton



Beverly Crosby



James Willard Fennington



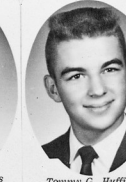
Sandra Sue Hanes



Cecil T. Hanes



Diana Lynn Pontius



Tommy G. Huffines



Nancy V. Hurley

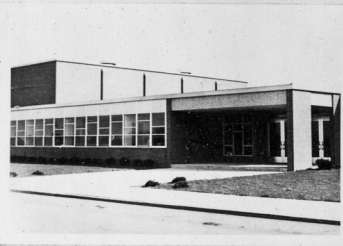


Phillip Dale Carter

LOGAN ELM HIGH SCHOOL

CLASS

1964




LOGAN ELM HIGH SCHOOL

CLASS

1965



JOHN HENN EXEC HEAD BOBIE BRAHMAN FAC
 JENNIFER CHILCOTE FAC VIRGINIA COURTHRIGHT FAC
 ALICE DE LONG FAC DAVID DUNCAN FAC MARY GARRETT FAC DOROTHY HAMRICK FAC
 STEPHEN J. HORST CONVENTOR HAROLD LEIST FAC KEITH MERRIN FAC ROBERT PETTY FAC
 VICTOR PONTIUS FAC DOROTHY JAMPSON FAC RICHARD WERTMAN FAC YERNA MARIE ADAMS RANDALL LEE ARLEIGH ROBERT EUGENE HANCOCK LOIS ANN BEATERS DOW WEST FAC CAROLE YETTER FAC EDSON YETTER FAC
 BERTHA MAE BRIDGINS MICHAEL DEAN BRYDEN DONALD DEAN COMBS WYNKY LEE CHENEVISE LINDA JEANNE DANL BETTY ANN DAVID SNET LOUISE DE LONG PAULINE LOUISE DASH WANCY JOAN EMOCH V PRES SHIRLEY RAY FILLS DORIS CATHERINE FULLEN
 SHARON LYNN GRAVES ROBERTA DARLENE HAMILTON SHIRLEY ANN HAMILTON VICKY SUE HANPHIRE RALPH EDWARD HOBEL GAYLE ELAINE HAVERTY CHARLES CLINTON HAYES VICKI LEE HOLDORN BILLY STEPHAN SGT. W ARMS CHERYL LYNN HULSE
 LUD JANE INGRAM BARBARA ANN JENKINS JANITA JUNE JOHNSON RAYMOND REUGEN JONES MERLE EDWARD JOHNSON JANICE LOUISE JUSTICE ARVALD S. LAYTON PAUL DANIEL LEACH JEANINE INEZ LEIST BRENDA SUE LUT BRETT LUTZ SGT. W. PRES
 GEORGE RICHARD MANTLIN THOMAS EUGENE MANSON BONNIE LOU MARLON THELMA JEAN Mc PARLAND THOMAS EUGENE McINTYRE PAIGE ANNETTE MILLER ANITA KAY MOYTS LARRY KEITH MOSS WANCY LOU RABE BREW EUGENE RIBAS
 GERVY LYNN RUFFIN STEPHEN RITTINGER WYBEE RICKY LEE SHAW ROBIN ELAINE SHROFF PRES GINGER LEE SPALLEY DAVID KEITH SMITH THOMAS ROBERT SPANZER PAUL LESLIE SPENNING ROBERT F. STANT DONNA KAY STEELE THOMAS STILES SGT. W. PRES
 SHIRLEY JO STEPHAN FRED STUMBO JR. DANIEL EUGENE STUBBS LEROY SWACKHAMER LINDA SUE TRIMMER SEC EDWARD CARL UNTER SHIRAZA LOU VAN FOSSEN SEC RONALD EUGENE PRES JIMMIE KEED WILSON PRES MELDEWTON WOLFE V. PRES

MANTROSE
STUDIO
CHICAGO, ILL.

LOGAN ELM HIGH SCHOOL

CLASS

1966



JOHN HENN SUPT.



EDW. WEST COUNSELOR



COKIE BRANHAM FAC.



JEANNETTE CHILCOTE FAC.



JAMES COLVILLE FAC.



VIRGINIA COURTRIGHT FAC.



ARTHUR DARNBROUGH FAC.



ALICE DE LONG FAC.



OWEN DUNCAN FAC.



GERALD LEIST FAC.



KEITH MERRIN FAC.



JEAN MILLS FAC.



ROBERT PETTIT FAC.



VICTOR PONTIUS FAC.



DOROTHY SAMPSON FAC.



MILDRED WERTMAN FAC.



GARDE YETTER FAC.



EDSON YETTER FAC.



REBECCA ANN ALUIRE



CONNIE PATRICIA RIERS



NED SMITH



DIANA DEE BROOKS



STEVE DUANE BURGER



ROBERT PATRICK BURTON



SUSAN L. CARPENTER



MARY ELLEN CARTER



JAMES DARRELL COLLINS



GARY LEE COURTRIGHT



PATRICK EUGENE DIRST



TERRY LEE DAST



CAROL SUE DE LONG



RAYMOND LEE DIEHL



TERRY LYNN DRESBACH



DAVID LYNN ETANIS



LEATRICE FAULK



TERRY FERRELL, JR.



KAREN FULKS



LARRY STEVEN GARIETT



MARY B. GOODE



BERNADINE GOSS



MARSHA LYNNE GUNDER



DONALD HANSTOVICK



DONALD EUGENE HARTLEY



JACK LEO HATZEL, JR.



RODNEY WARREN HEDGES



CYNTHIA A. HILDENBRAND



MARILYN SUE HOFFMANN



NANCY LEE HOLDEN



LARRY L. HOLLAND, SGT. AT ARMS



KATHLEEN MARIE HUFFER



DONALD HUFFINES, SEC. TREAS.



EDWIN M. HUMPHREY, SEC. TREAS.



RODNEY CRAIG INGRAM



MARILYN JEAN JINKS



EDITH MAE KEATON



ROBERT LEE KERNS



SHARON ANN KNEEL



MARY BELLE KREISEL



ROBERTA JO LOWERY



HOWARD A. MARTINDALE



JOHN EDWARD RALEY



DAVID MONTGOMERY



TERRY LEE MOSS



LINDA LEE MURRAY



ROBERT RAY PRESS



ANN ELIZABETH PRESTON



BERN L. POLING, SGT. AT ARMS



LINDA KAY PONTIUS



MICHAEL RADABAUGH



RICHARD ALAN RAWLINS



CAROLYN KAY REAY



DARYL REICHELDERFER



DONALD DUANE SCHALL



REBECCA LOUISE SEARCH



STEPHEN ZEE SHALLEY



MARK DAVID SPENSKY



RUTH ESTELLA SPUNG



ROY ALLEN STRAWSER



ELAINE TATMAN



MELANIE LYNN TEETS



JULIANNE TEMPLE



MICHAEL A. TEMPLE, SGT. AT ARMS



ELLEN MARIE WAALEY



JOYCE ANGELA WHALEY



PAUL JAY WHITE, JR.



DAVID KEITH WILLSON



KATIE JO WILSON



JOHN RICHARD YOUNG



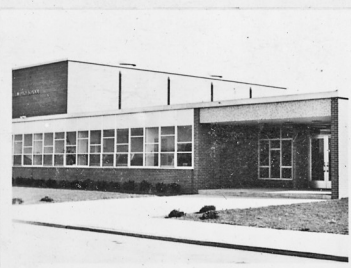
JUDY KAYE YOUNG

MONTROSE
STUDIO

LOGAN ELM HIGH SCHOOL

CLASS

1967



JOHN HENN SUPT.



CAROL ALBRIGHT FAC.



GOBLE BRANHAM FAC.



BOB WEST GUIDANCE



JAMES BUTZ FAC.



MICHAEL COCHRAN FAC.



VIRGINIA COURTRIGHT FAC.



ALICE DE LONG FAC.



PATRICIA FITZPATRICK FAC.



DOROTHY HAMRICK FAC.



GERALD LEIST FAC.



KEITH MERRIN FAC.



JEAN MILLS FAC.



LARRY PALMBLADE FAC.



ROBERT PETTY FAC.



VICTOR PONTIUS FAC.



DOROTHY SAMPSON FAC.



MILDRED WERTMAN FAC.



DEBRA ANKRUM



DONALD BETNER



GARY LEE BLACK



ROSCO ARLIE BOBS



CAROLYN RUTH CARTER



JEANLYNE SUE FRY



DEBBIE CHAFFIN



ROBERT EDWARD COLLINS, JR.



DANNY LEE DAIL



PATRICIA DUVALL DAWLEY, SEC. 1967



MARY MARTHA DRESBACH



LARRY J. DUNNY



GREGORY DUNKLE



JOYCE ANN EBI



JAMES DAVID EVANS, SEC. 1967



BRENDA KAY FAUSNOUGH



JOYCE ANN FETHEROFF



SANDRA GIFFORD



LINDA SUE FISCHER



BRENDA FORREST



GLENN FORREST



STEPHEN FOUCI



GREGORY E. FRAUNFELSER



STEPHEN ANTHONY FIKE



ELLEN ELIZABETH FOKAS



ALAN LEE GABRIEL



KANDY KAY GARRETT



ROBERT GEARHART



SANDRA GIFFORD



FRANK ROBERT LANDRUM



ELIZABETH ANN GILDERSLEEVE



WILLIAM GOODE



MARTHA ANN HANSFORD



JAMES MILLARD HIRT



SUSAN KAY HATLEY



DOROTHY HUFFMAN, SEC. 1967



RITA ELAINE JUBY



LARRY JOE JUSTICE



THOMAS KARSHNER



PAUL KING



STEPHEN KINZE



FRANK ROBERT LANDRUM



SANDRA LAUERMAN



EDWIN ANGUS LEDSON, JR.



PAMELA JEAN LEIST



JANET MARION



BARBARA MARTIN



STEPHANIE MARTINDALE



RICHARD MASSIE



VALERIE MAY



BARBARA MC CAIN



TERRY MC KNIGHT



ROBERT KENT MERRIN, SEC. 1967



RICHARD WALTER SHAKER



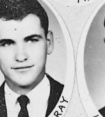
DOYLE CLIFTON MILLER, FAC.



JAMES REED MOOREHEAD



DAVID PAUL MURRAY



KENNETH PALTNER



PATTY PINE



BARBARA KEITH RAIDER



TERRY LEE REED



CHARLES RHODES



DIANA SCHAAL



THOMAS DUNLAP SMITH



KAREN SUE WOLFORD



RICHARD WALTER SHAKER



BETTY JO STEVENS



LINDA STILES



MARY LOUISE STRAMBER



JOSEPHINE VAN FOSSEN



PAULA WEAVER



DOUGLAS BRUCE WEETLES



MARGARET ANN WHITE



SCOTT C. WILSON



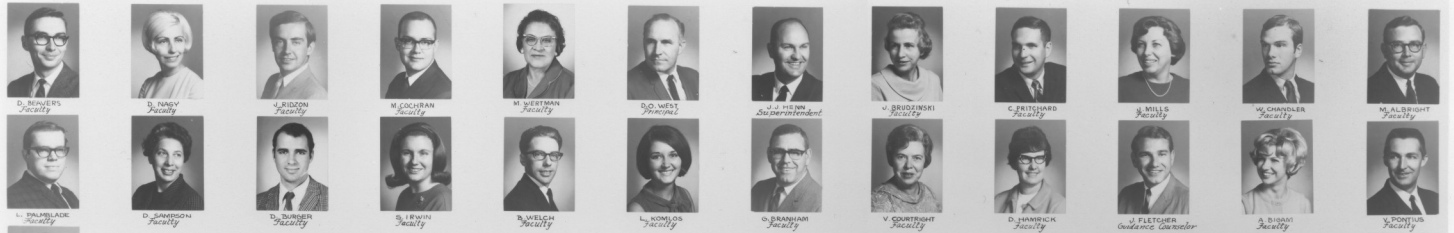
BRUCE WOLFORD



KAREN SUE WOLFORD

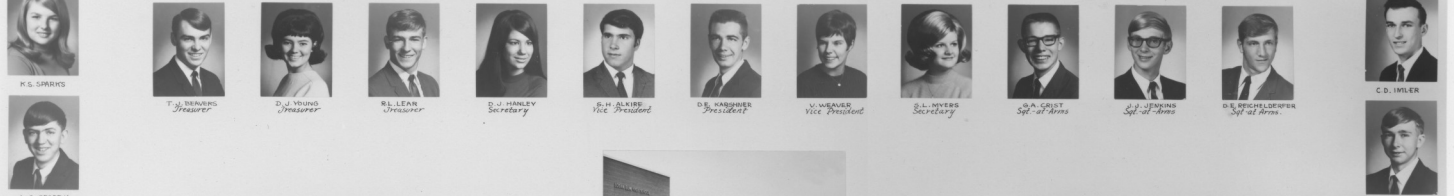


RICHARD WALTER SHAKER



D. BENNETT Faculty
D. NAVY Faculty
J. RIDGON Faculty
M. COCHRAN Faculty
M. SHERMAN Faculty
D.D. WEST Faculty
J. J. MOORE Superintendent
V. BRIDZINSKI Faculty
C. FLETCHER Faculty
J. MILLIS Faculty
H. CHANDLER Faculty
M. ALBRIGHT Faculty
L. PHILLIPS Faculty
D. SAMMON Faculty
D. ZUNIGER Faculty
S. IERWIN Faculty
B. WELCH Faculty
L. KOMLOS Faculty
D. BRANSHAW Faculty
V. COURTHIGHT Faculty
D. HANDECK Faculty
J. FLETCHER Guidance Counselor
A. SHANN Faculty
V. L. HUNT Faculty
V. PONTIUS Faculty

Logan Elm High School

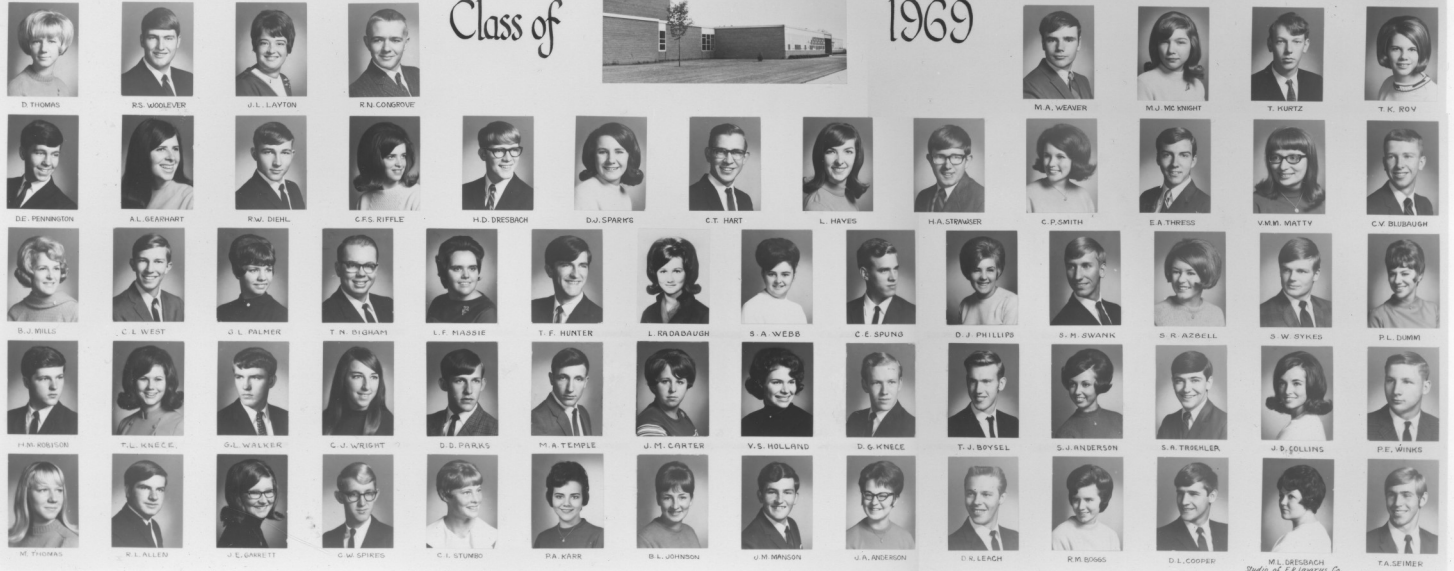


K.S. SARKIS
T. J. BENNETT Treasurer
D. J. YOUNG Treasurer
B. L. LEAN Treasurer
D. J. HANLEY Secretary
B. H. CLAIRE Vice President
D. J. HANMER President
V. HENDEL Vice President
S. L. HYBER Secretary
D. A. GIBST Sp. at Large
J. J. JONES Sp. at Large
D. E. SPICHLER Sp. at Large
C. D. WILK Faculty
D. S. AGR Faculty



Class of

1969



D. THOMAS
R.S. WOOLVER
J. L. LAYTON
R.J. COMBINE
D.E. FOWNINGTON
K.L. GEARHART
R.W. DIEHL
C.F.S. RIFFLE
H.D. DRESDICH
D.J. SPARTE
C.T. HART
L. HAYES
H.A. STUBBER
M.A. WEAVER
M.J. MCKNIGHT
T. HURTZ
T. K. ROY
D. THOMAS
R.S. WOOLVER
J. L. LAYTON
R.J. COMBINE
D.E. FOWNINGTON
K.L. GEARHART
R.W. DIEHL
C.F.S. RIFFLE
H.D. DRESDICH
D.J. SPARTE
C.T. HART
L. HAYES
H.A. STUBBER
M.A. WEAVER
M.J. MCKNIGHT
T. HURTZ
T. K. ROY
B.J. WILLS
C. L. WEST
J. L. PALMER
T. N. DIGHART
L. F. HADDE
T. F. HUNTER
L. RUDABAUGH
S. A. WEBB
C. E. SPUNG
D. J. PHILLIPS
S. M. SWANK
S. R. AZBELL
S. W. SYKES
P. L. DIMMI
H. H. BOYSON
T. L. KNECE
S. L. WALKER
C. J. WRIGHT
D. D. PARKS
M. A. TEMPL
J. M. CARTER
V. S. HOLLAND
D. G. KNECE
T. J. BOYSEL
S. J. ANDERSON
S. R. TREHLEA
J. S. SOLLINS
M. THOMAS
K. L. ALLEN
J. L. SPARKETT
G. W. SPIRES
C. L. STUMBO
P. A. KARR
B. L. JOHNSON
J. M. MANGON
J. A. ANDERSON
D. K. LEACH
R. M. BOGGS
D. L. COOPER
M. L. DRESDICH Studio of P. H. Logans Co.
T. A. SEINER



LOGAN ELM HIGH SCHOOL
CLASS OF 1970



(Note: The following list of names is a transcription of the names visible in the yearbook grid, organized by row from top to bottom. Names are in all caps as they appear in the yearbook.)

Ryan Welch Family, Linda Kasper Family, Michael C. Brown Family, Joan Miller Family, Gailly Graham Family, Debra 1967 Family, Jim Fischer Counselor, John Smith Superintendent, Don O. West Principal, Ellen Estimer Family, Victor Zimbal Family, Dorothy Johnson Family, Charles Kirkland Family, Joan Juretschke Family, Larry Pichelske Family, Marvin Altmeyer Family, William Cappellet Family, Virginia Cappellet Family, David Dyer Family, Judith Rogers Family, Miriam Hoffman Family, Karen Dullam Family, Vicki Ayers Family, Diane Straz Family, Steve Tealator Family, Nancy Smith Family, Bob Triggiani Family, Christie Silas Family, Ted Rogan Family, Joanne Arledge Family, Clarence Wanda Jr. Family, James Davis Family, Steven Ryan Family, Anne Irwood Family, Ben Parker Family, Janet Shasta Family, Paul Elwood Family, Dotty Whaley Family, Roger Johnson Family, Conde Phillips Family, Mark Empton Family, Susan Wickard Family, Philip Miller Family, Barbara Robinson Family, Neil Biddle Family, Michele T. Whaley Family, Gerald Jaynes Jr. Family, John Ferguson Family, Dan Adams Family, Sheila Basile Family, Clarence Shuman Family, Barbara Sorensen Family, Kim Ward Family, Sharon Walker Family, Marie Tomblin Family, Peggy Wilson Family, Richard Carter Family, Judy Sommer Family, John Donahue Family, Lynn McCoy Family, Joe Parker Family, Diane Leathers Family, Donald Smith Family, Vicki Whiting Family, Dan Straz Family, Martha Hilde Family, Raymond Tomlinson Family, LeAnne Pauls Family, Dale Herley Family, James Eastman Family, Ralph Boly Family, Sheila Smith Family, Kenneth Jones Family, Sandra Frazier Family, Patricia Lee Family, Rick Carroll Family, Lynette Justice Family, Robert Sticker Family, Peggy Alley Family, Cecelia Barnhight Family, Glenn Crick Family, James Jones Family, Craig Fench Family, Della Hamilton Family, Henry Jones Family, Thane Smith Family, Jim Schenck Family, Peggy Cooper Family, Stephen Jauer Family, Wade Double Family, Rick Taylor Family, Deane Hiltzberg Family, Mike Elwood Family, Karen Karicher Family, James Franklin Family, Vicki Frenschler Family, Frank Cones Family, Pat Sawyer Family, Randall Brown Family





Judith Stevens
Faculty



Michael Cochran
Faculty



Dorothy Sampson
Faculty



Gable Drueham
Faculty



Lynda Komlos
Faculty



Ellen Ritzinger
Nurse



John Irem
Superintendent



Don West
Principal



Jim Fletcher
Counselor



Calleen Coffer
Faculty



Byron Welch
Faculty



Suzanne Kulk
Faculty



Mark Albright
Faculty



Dorothy Hamrick
Faculty



Larry Johnson
Faculty



Arlene Hamm
Faculty



Steve Harvey
Faculty



Jane Miller
Faculty

LOGAN ELM HIGH SCHOOL

CLASS OF 1971



Donna Day
Faculty



Victor Joubert
Faculty



Jan Brudnak
Faculty



David Stevens
Faculty



John Weaver



Teresa Wright



David Price
Faculty



Don Suggs
Faculty



Charles Pritchard
Faculty



William Chandler
Faculty



Mari Zahrad



Richard Bassford



Charles Sims



Conna Shaffer



John Stant



Jane Spang



Timothy Spahnman



Kenneth Dunn
President



Suzanne Swank



John Strasser



Wanda Williams



Don Simmons



Lisa McCoy



Theodore Hobbes



Juliana Hand



Charles Karsner



Donna Moss



Bob Hanson



Deborah Harvey



Brian Moss



Sallan Rhoads



Larry Moss



Rebecca Irem



Jacquelyn Crosby



Terry Bickie



Janet Burger



Ricky VanFossen



Elizabeth Sauer



Brent Moss



Patricia Jinks



George Sparks, Jr.



Janice Kerus



Steven Curtis



Karen Kerus



James Fox, Jr.



Susan List



Michael Hopp



Cathy McHenry



Kevin Kellishel



Karen Mason



Mark Knace



Dennis Luckhart



Keith Lantz



Kim Lemley



Mary Hanes



William Courhart



Judy Doffman



George Orsbeck, Jr.



Betty Dolander



Robert Deltson



Susan Hilsenbrand



Brent Hilsenbrand



Nancy Bilsback



Michael Diehl



Betty Frasier



Randall Downs



Elaine Fry



Gary Temple



Darlene Collins



Michael Skelton



Carolyn Blaze



George Russell



Dale Valentine



Larry Smith



Maria Bieble



Roger Young



Nancy Robertson



Robert Throckmorton



Beverly Butler



Yvoni Boyal



Steve Chaffin



Ralph Anderson, Jr.



Dale Purish



Bryan Weaver



LOGAN ELM HIGH SCHOOL
CLASS OF 1972



Steve Harvey Faculty *Linda James Faculty* *Mary Alwright Faculty* *Wanda Jones Faculty* *Vicki Paulsen Faculty* *Ruth Swanson Faculty* *John Ross Superintendent* *Don O. West Principal* *Ellen Ringler Lib. Tech.* *William Cloutier Faculty* *Jan Ellis Faculty* *Dynn Welch Faculty* *Juliah Javers Librarian* *David Price Faculty* *Suzanne Dahl Faculty*

David Jowers Faculty *Deverly Warner Faculty* *Jim Fitcher Counselor* *Carol Armstrong Faculty* *Dorothy Hamrick Faculty* *Donna SNO Faculty* *Jan Bralinski Faculty* *Charles Pritchard Faculty* *Amber Ryan Faculty* *Golda Drakham Faculty*

Richard Phyllo Faculty *Ronald Juber Faculty* *Donna Smith* *Brad Berry* *Ruth Crist* *Sheron Boyce* *Alma VanCandy* *Karen Sales* *Gary Werman* *Linda Mayberry*

Don Sparks *Janey Smith* *Norman Karsner* *Brenda Chaffin* *Bill Anderson* *Steve Pacey President* *Mervin Elshes* *Jeff Young* *Mary Baily* *Ralph Wiseman*

Amy West *Greg Chesser* *Theresa Quinol* *Richard Stevens* *Ricky Patrick* *Wendie Text* *Roberta Miller* *Vic Smith* *Yvonne Higgins* *Tom Stinner* *Melody Winkler* *Brady Steiner* *Shelley May* *Dennis Schaal* *Steve Carter* *Theresa Keras*

Dennis Phillips *Holliday Parker* *Keith Payne* *Theresa Hollibaugh* *Rich Mages* *Susan Ketchumler* *Steve Jones* *Debbie Lutz* *Bill McLaughlin* *Judy Johnson* *Alan Jones* *Joyce Maske* *Terry Shop* *Kathy Samsler* *Rich Howard*

Gail Hines *Betsy Gram* *Bob Helms* *Debbie Ely* *Mike Jones* *Yvonne Drabach* *Jim Birt* *Elizabeth Carter* *Don Gordon* *Debbie Collins* *Tim Blakey* *Louis Bassell* *Elaine Cantelberry* *Steve Fischer* *Rich Blankenship*

George Dahl *Jamene Biggs* *Steve Casley* *Patricia Black* *Don Dean* *Judy Barnhart* *Ronald Cox* *Sandra Ash* *Doug Barnett* *Bob Brown* *Shelley Allen* *Rick Arledge* *Joanne Jowers* *Gary Sumner* *Carol Sparks*

Osborne
MOULTON, OHIO




LOGAN ELM HIGH SCHOOL
CLASS OF 1977



This yearbook page features a grid of 100 oval portraits of the Class of 1977 students. The portraits are arranged in 10 rows and 10 columns. A central banner at the top reads "LOGAN ELM HIGH SCHOOL CLASS OF 1977". Below the banner is a small aerial photograph of the school building. The names of the students are printed below each portrait.

LOGAN ELM HIGH SCHOOL
CLASS OF 1978



This yearbook page features a grid of 100 oval portraits of the Class of 1978 students. The portraits are arranged in 10 rows and 10 columns. A central banner at the top reads "LOGAN ELM HIGH SCHOOL CLASS OF 1978". Below the banner is a small aerial photograph of the school building. The names of the students are printed below each portrait.

Logan Elm High School Demolition July 2023

Logan Elm High School shown below was opened in the fall of 1960 and with the building of the new high school as shown on the right, was demolished in July of 2023.

Demolition started on July 17 and by July 27, all that was left was a pile of rubble. It took several more days to remove all the debris and grade the area that once was occupied by the school.

Watson General Contracting was in charge of the demolition and cleanup. The following photos were mainly taken by the author. BJ Van Fossen supplied the drone photos of the school before demolition and Brody Rine the drone photos during the demolition.



Logan Elm H.S. Before Demolition















New school under construction





Portable classrooms are the first to go















Drone photos from Brody Rine











